




SECTIONAL | ROLLER | OVERHEAD | DOUBLE-LEAF | AUTOMATIC OPERATING UNITS

INDUSTRIAL DOORS

 400 E ILLINOIS ST SUITE B, LEMONT, IL 60439

 773-403-3463

 INFO@IMPERIALWINDOWS.COM





INDUSTRIAL DOORS

GENERAL OVERVIEW 4 - 9

SECTIONAL DOORS 10 - 37

BR-100 ROLLER DOORS 38 - 45

OVERHEAD SLIDING DOORS 46 - 51

DOUBLE-LEAF DOORS 52 - 57

AUTOMATIC OPERATING UNITS 58 - 67

COLOURS 68 - 75

INSPIRATION 76 - 109

www.wisniowski.eu



Why WIŚNIOWSKI?

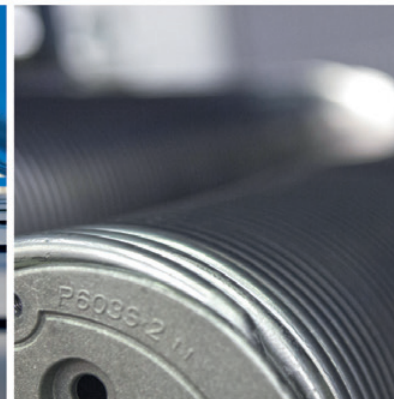
For the last three decades, we have been working in accordance with the idea of the founder of the WIŚNIOWSKI brand, Andrzej Wiśniowski, who made it his goal to create innovative products addressing all of our customers' needs.

We want your home to be secure and comfortable. Taking advantage of our 30 years of experience in the production of garage doors, gates, windows, doors, and fences, we offer our customers top quality products. We know what a modern home needs and what challenges the household may face.

Currently, our production hall spanning 270,000 square metres manufactures thousands of garage doors, gates, windows, doors, and fences every day. At the same time, we are also able to customize the products to meet our customers' requirements.

Everyone has different needs and expectations, which is why when manufacturing our products, we focus on listening to what you have to say.

Meet the WIŚNIOWSKI brand - enter the world of comfort and security.

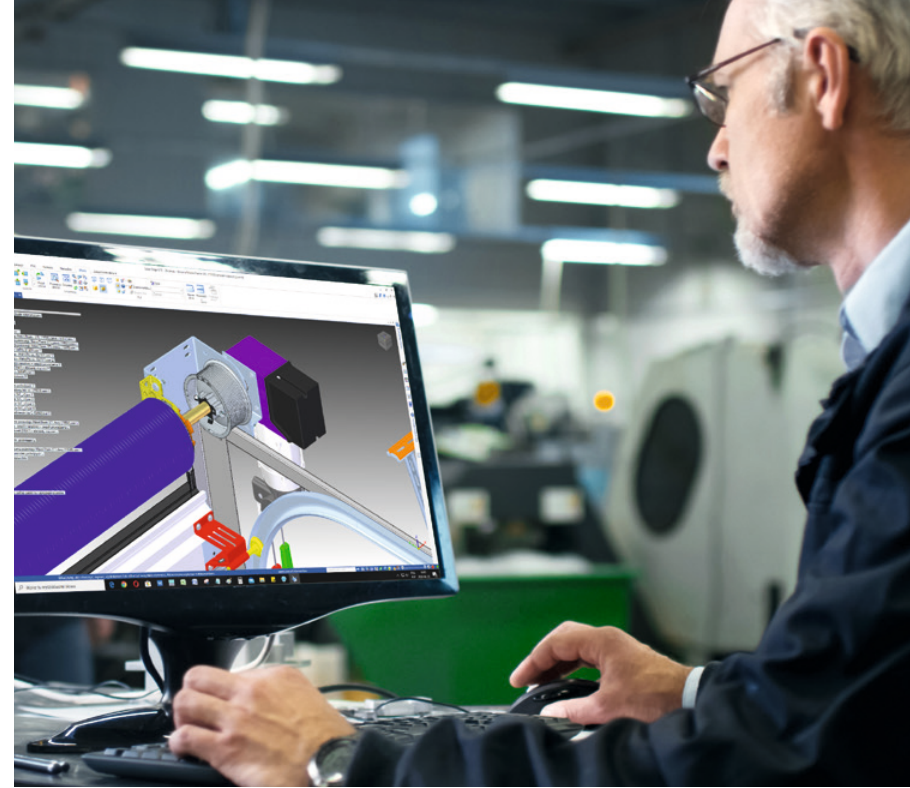




WIŚNIEWSKI | Perfection in every detail.

Modern technologies guarantee top quality.

Modern business needs innovative solutions. These can only come about as a result of state-of-the-art processes. So when we design and plan new products, we never forget about investing in our plants and production lines. This is taken care of by the Technical Development Department which placed WIŚNIEWSKI on the track of the Fourth Industrial Revolution nearly 20 years ago and today enables WIŚNIEWSKI to remain one of the leading manufacturers of garage doors, gates, windows, doors, and fences in Europe.



The TÜV SÜD certificate

We insist on implementing solutions that extend the life of our garage doors already at the design stage. Our TÜV SÜD certificate guarantees that all the processes are performed with strict monitoring of each stage, from the purchase of raw materials, through design, technology, manufacture, and the final product, to customer support. It is a promise of the highest quality, safety, and comfort at each stage of use.

Thinking about your comfort and **safety**

Protection systems used in the WIŚNIEWSKI sectional doors are designed to meet all the current requirements. The most important one is to ensure safety, security, and comfort to users at any time. Our doors meet the stringiest safety standards - which is certified by the Declaration of Performance - the CE marking. High safety standards are ensured thanks to the use of a number of technological solutions, such as special panel shape, safety brakes, an integrated spring break safety system, and rollers with bearings.



Industry **4.0**

Our plants operate in the spirit of Industry 4.0, or the Fourth Industrial Revolution. It combines the achievements of modern automation, robotics, and IT. The technology allows everyday efforts of WIŚNIEWSKI's specialist, constructor, and engineer teams to be forged into innovations and improvements even faster and to provide garage doors, gates, windows, doors, and fences with top quality and durability.

Industry 4.0 lets us make our products to measure, to satisfy the specific requirements of each order. The customer decides about the majority of the features of their end product.



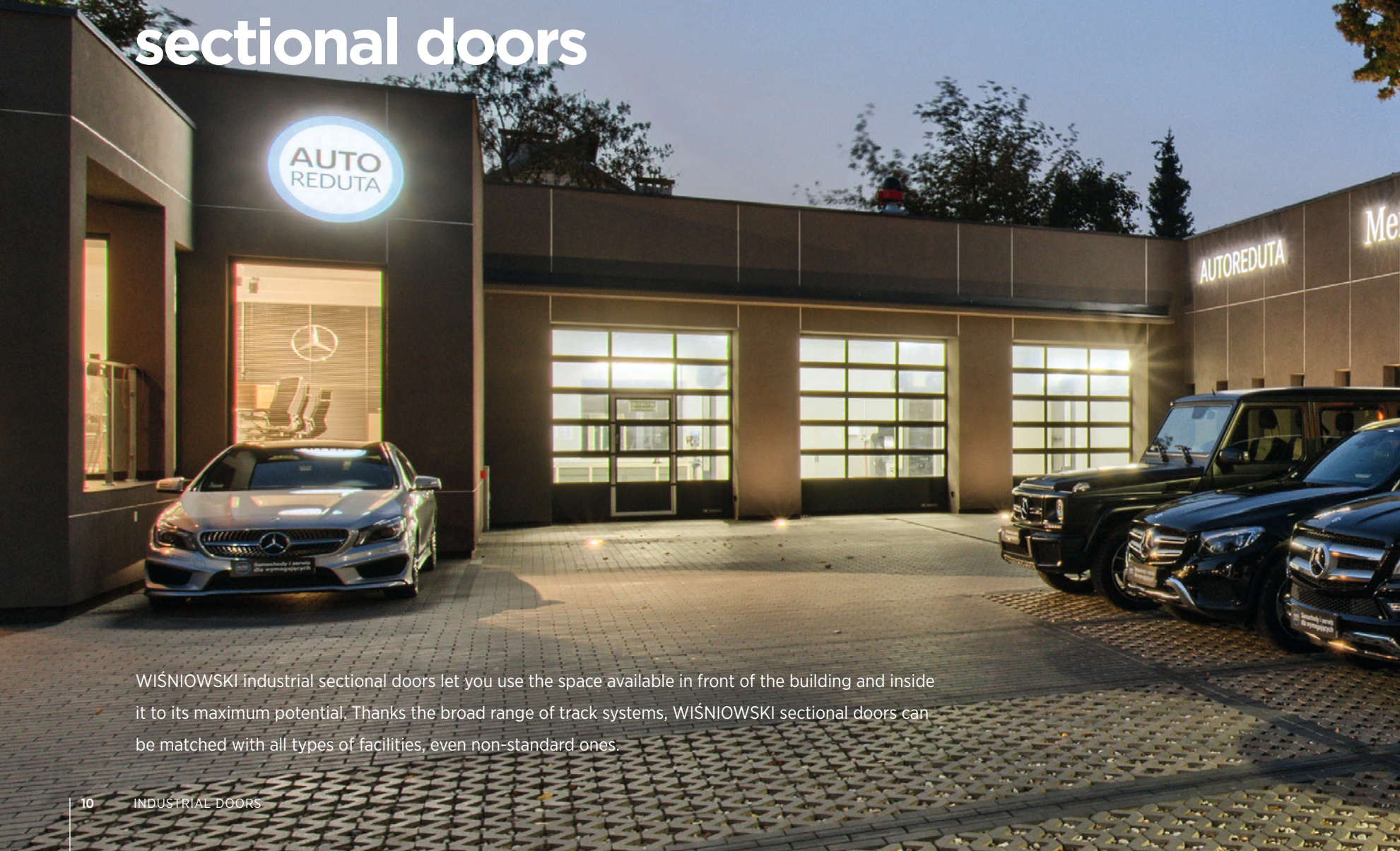
Choose a door **tailored** **to your needs**

WIŚNIOWSKI industrial doors provide the highest functionality and safety while maintaining a consistent look of all the elements. They were designed to ensure that the way they work will not hinder the operations inside an industrial facility and so that their use should be convenient and efficient in all situations. We created a number of solutions dedicated for various types of buildings. Choose the doors best suited to the image of your business. Our range includes sectional, roller, and overhead doors.





Welcome to the world of **WIŚNIEWSKI industrial sectional doors**



WIŚNIEWSKI industrial sectional doors let you use the space available in front of the building and inside it to its maximum potential. Thanks the broad range of track systems, WIŚNIEWSKI sectional doors can be matched with all types of facilities, even non-standard ones.



CYCLES

MINIMUM NUMBER OF CYCLES

minimum number of cycles:

- **100,000** in the MakroPro 100 2.0 and MakroPro ALU 100 2.0 doors,
- **25,000** in the MakroTherm 2.0, MakroPro 2.0, and MakroPro ALU 2.0 doors,
- **15,000** in the MakroTherm XXL doors.



AIR PERMEABILITY

AIR PERMEABILITY

- **class 4** – MakroPro 2.0, MakroPro ALU 2.0, MakroPro 100 2.0, MakroPro ALU 100 2.0,
- **class 5** – MakroTherm 2.0, MakroTherm XXL.



SOUND ABSORPTION

SOUND ABSORPTION

In doors made of a 40 mm panel, the sound reduction index is **Rw 23 [dB]** without a wicket door and **Rw 24 [dB]** with a wicket door. In doors made of 60 mm panels – **Rw 24 [dB]**.



WIND RESISTANCE

WIND RESISTANCE

Resistance to wind load:

- **class 3** – MakroPro 2.0, MakroPro ALU 2.0 (double glass), MakroPro 100 2.0, MakroPro ALU 100 2.0 (double glass),
- **class 4** – MakroTherm 2.0, MakroTherm XXL, MakroPro ALU 100 2.0 (double glass, reinforced panels), MakroPro ALU 2.0 (double glass, reinforced panels).



THERMAL INSULATION

THERMAL INSULATION

The thermal transmittance factor is **0.48 W/m²K** for the 40 mm thick panel and **0.33 W/m²K** for the 60 mm thick panel.



WATER RESISTANCE

WATER RESISTANCE

- **class 2** – MakroPro 2.0, MakroPro ALU 2.0, MakroPro 100 2.0, MakroPro ALU 100 2.0, MakroTherm 2.0, MakroTherm XXL.



WARRANTY

WARRANTY

All industrial products are covered with a **24 month** warranty with the possibility to extend it to **60 months**.



ACCESS CONTROL

ACCESS CONTROL

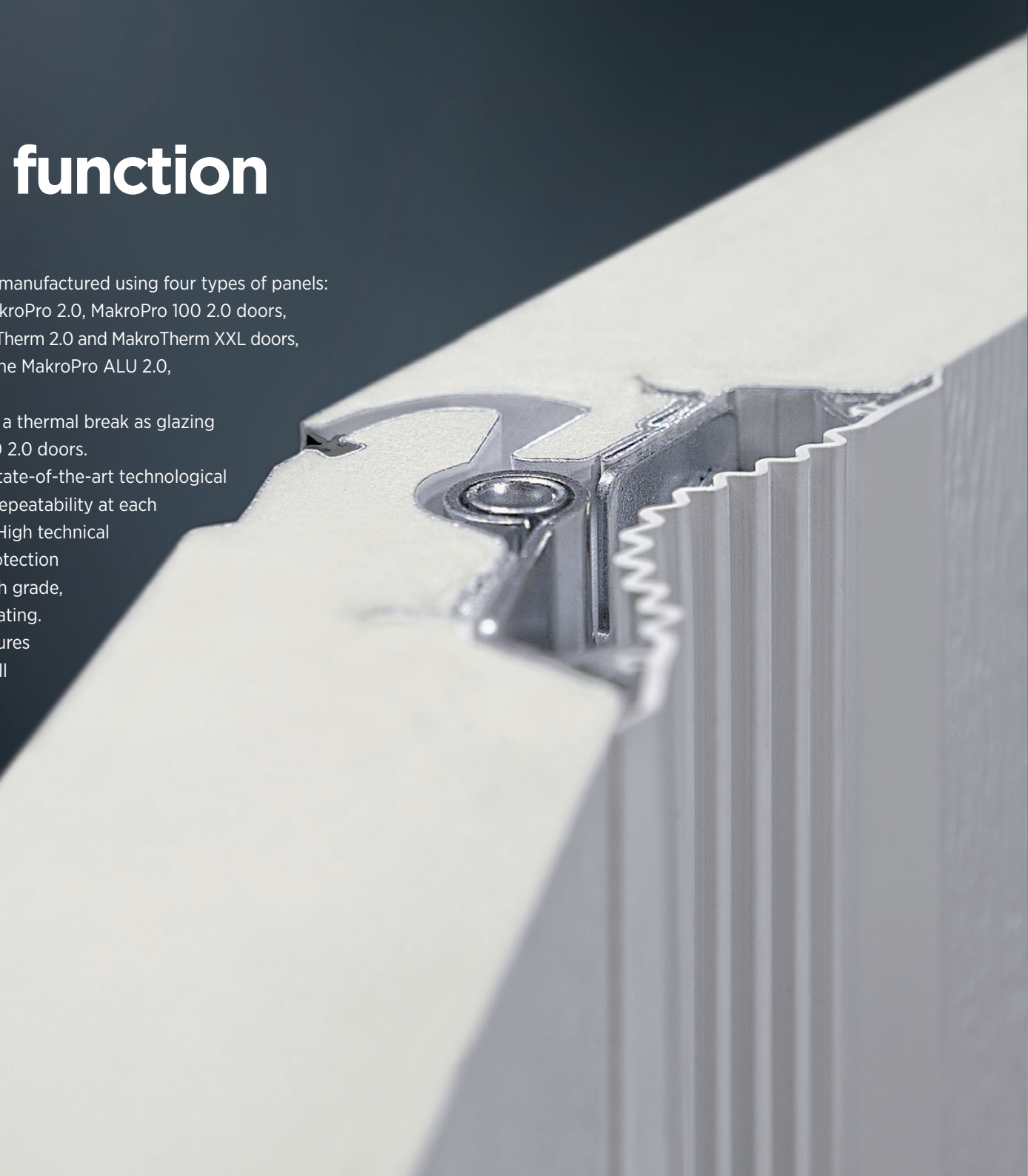
WIŚNIEWSKI industrial doors can be fitted with a number of solutions for full access control, e.g.: wireless, smartphone or microwave motion sensor control.

Form and **function**

Sectional doors by WIŚNIEWSKI are manufactured using four types of panels:

- steel panel 40 mm thick for the MakroPro 2.0, MakroPro 100 2.0 doors,
- INNOVO 60 mm thick for the MakroTherm 2.0 and MakroTherm XXL doors,
- aluminium panel 40 mm thick for the MakroPro ALU 2.0, MakroPro ALU 100 2.0 doors,
- aluminium panel 40 mm thick with a thermal break as glazing for the MakroPro 2.0, MakroPro 100 2.0 doors.

All our panels are manufactured on state-of-the-art technological lines, which ensure high quality and repeatability at each stage of the manufacturing process. High technical parameters and reliable corrosion protection are obtained thanks to the use of high grade, galvanized steel with paint or film coating. The stiff polyurethane foam core ensures optimal strength of the panels, as well as optimal thermal insulation. Special solutions, such as the 5-layer sheet bending system, ensure stable fastening of all connections.



STEEL PANEL

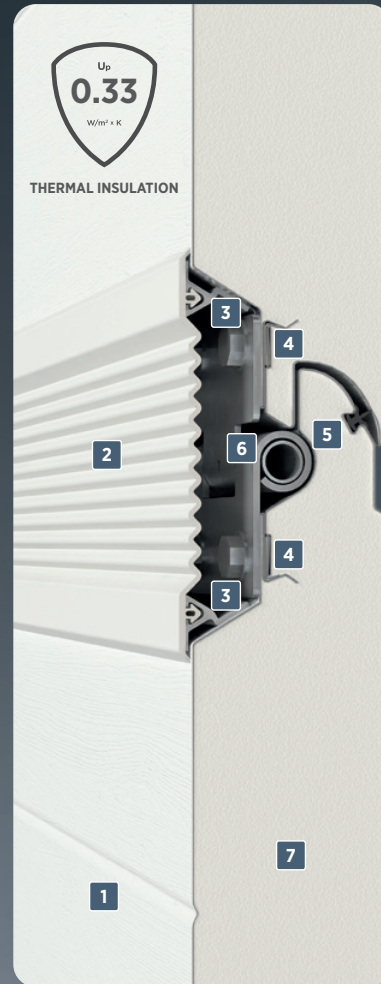
← 40 mm →



Door: **MakroPro 2.0,**
MakroPro 100 2.0

INNOVO PANEL

← 60 mm →



Door: **MakroTherm 2.0,**
MakroTherm XXL ^①

ALUMINIUM PANEL

← 40 mm →



Door: **MakroPro ALU 2.0,**
MakroPro ALU 100 2.0

ALUMINIUM PANEL WITH A THERMAL BREAK

← 40 mm →



Glazing for the **MakroPro 2.0,**
MakroPro 100 2.0 doors

1. Closed panel construction. 2. Flexible panel joint cover. 3. Aluminium profile for fastening flexible covers. 4. Five sheet layers at the hinges. 5. Panel joint seal. 6. Concealed hinge. 7. Freon-free polyurethane foam. 8. Thermal break. 9. Aluminium glazing beads painted in the door colour.

^① - the MakroTherm XXL doors do not feature panel joint seals.

MakroPro 2.0

MakroPro ALU 2.0

Top quality
guarantee.

Professional business activities require professional solutions.

The MakroPro 2.0 door series was designed by experts who build the WIŚNIEWSKI brand on a daily basis and are aware of the needs of rapidly growing companies. Business raises the bar high and sets specific requirements for products that may determine success.

Industrial doors need to ensure durability, safety, thermal insulation, easy fitting and operation, as well as burglary protection.

An ideal product has to combine all the above-mentioned features.





THERMOSET™

The crowning argument for efficient thermal insulation.

Thermal insulation is an investment. A tight and durable door brings about considerable savings on electricity, maintenance, and time. WIŚNIEWSKI sectional garage doors are the only doors in the market boasting the THERMOSET™ thermal insulation kit as standard. This solution improves the insulation of critical elements and ensures protection from cold and heat. The money you save with proper thermal insulation can be put towards faster growth of your business!

MakroPro 2.0,
MakroPro 100 2.0



THERMAL INSULATION
For the 40 mm panel

MakroTherm 2.0



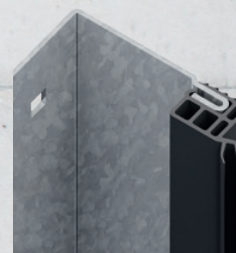
THERMAL INSULATION
For the 60 mm panel



Avoid heat loss.

Choose excellent thermal insulation and reap the benefits!

1.



Side gasket – the warm, four-chamber, hard and soft side gasket is a practical state-of-the-art solution. On the one hand, thanks to the use of a double gasket and four-chamber construction, it effectively eliminates thermal bridges, while on the other, it ensures a safe distance between the lintel and the door leaf.

2.



Top gasket – the warm, elongated, two-lip top gasket ensures double sealing in the top section of the door.

3.



Corner gasket – this solution enables maximum sealing of the top corners of the door – the area where the side gaskets join the top gasket.

3

THERMAL INSULATION IS AN ADVANTAGE, AND THIS IS WHY THE THERMOSET™ THERMAL INSULATION KIT COMES **STANDARD** WITH ALL WIŚNIEWSKI INDUSTRIAL DOORS!

MakroPro 2.0 and MakroPro ALU 2.0

A new series of industrial sectional doors.

Each element of the MakroPro 2.0 door series was designed with utmost attention to detail, all the while bearing in mind that the ready product will have to face tough requirements. The technological solutions that we used are unique throughout the market and ensure a high degree of safety and durability of the entire design, as well as easy fitting and servicing. The door is available in a steel and an aluminium version.



EASY
INSTALLATION



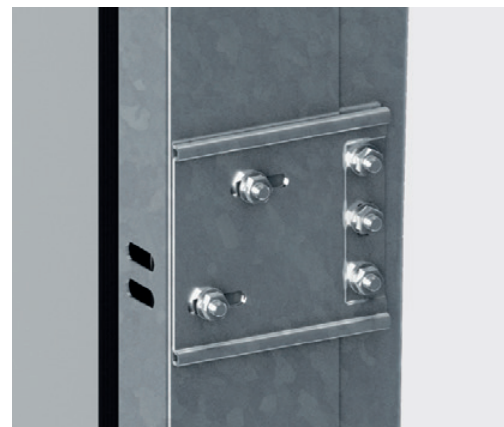
See the data sheet of the MakroPro 2.0 and MakroPro ALU 2.0 sectional doors.



Tracks – made of galvanized sheet 2 mm thick. A thicker wall in combination with a specially formed edge prevents guiding rollers from derailing and considerably improves the stabilization of the door track system.



Quiet guiding rollers – larger roller holders were fitted with special bushes made of self-lubricating plastic. With this solution, door operation became considerably smoother because the structural vibrations are silenced and attenuated.



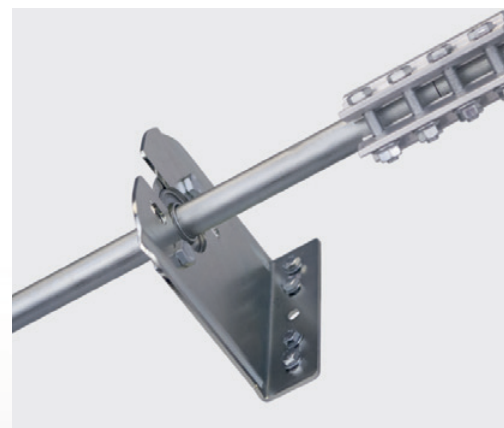
Screwed connection of the opening frame with the track – using mounting plates. With this solution, the offset of the vertical tracks (fixing hole adjustment) from the wall can be modified. This makes it possible to only replace the tracks. The tracks are screwed down with the opening frames at the factory.



Rear crossbar – made of 2 mm thick sheet. Together with sheet angle bars, it forms a robust stabilizing element. It is also used as a frame gauge that helps to properly and quickly determine the spacing of the opening frames of the door during fitting.



1,000 mark – a mark – an arrow – that is placed at the height of 1,000 mm from the base of the vertical frames. This makes it possible to accurately find the proper height for fitting the opening frames.



Fixing elements – all mounting, safety, and support plates of the drive elements of the shaft now have an open structure. This solution enables quicker and easier installation, replacement, and servicing of door drive elements.

MakroPro 100 2.0 and MakroPro ALU 100 2.0.

Lasting functionality.

Thanks to the replacement of conventional springs with a cutting edge drive unit – the MakroPro 100 2.0 and MakroPro ALU 100 2.0 industrial doors can perform up to 100,000 cycles!



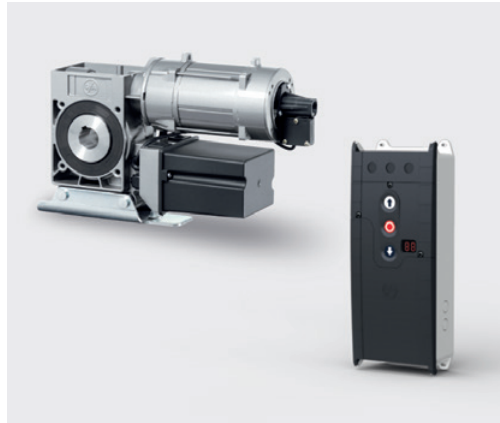
See the data sheet of the MakroPro 100 2.0 and MakroPro ALU 100 2.0 sectional doors.

THE MOST ADVANTAGEOUS INSTALLATION

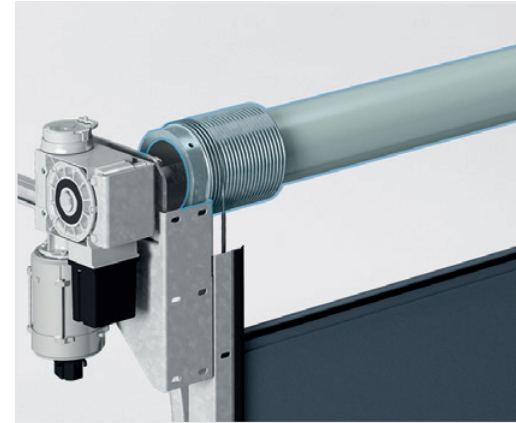
CONDITIONS The leading-edge door drive unit can be fitted to the tallest of lintels. Thanks to our broad range of track systems, WIŚNIEWSKI industrial doors can be matched with all types of buildings, even non-standard ones.



The leaf of sectional doors is lifted vertically in line with the installed track type. It makes it possible to make maximum use of the space in front of the facility's door.



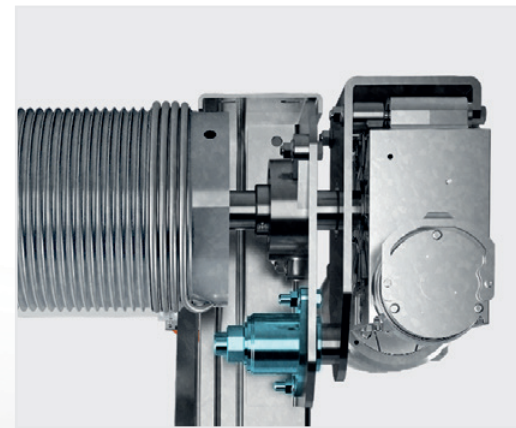
The door is fitted with a GfA SI series electric drive unit as standard – it ensures comfort of use regardless of the door size.



100,000 cycles – because we replaced traditional springs with a modern drive unit, our door can perform an increased number of cycles. With 10 cycles per day, this amounts to 27 years of use!



Cheaper servicing and use – the springs do not require replacement and tension checks.



Smooth operation – thanks to the use of purpose-built stabilizers fixing the electric drive unit, the door operates quietly, smoothly and the drive unit does not transfer vibrations.

MakroTherm 2.0. Effective thermal insulation.

The MakroTherm 2.0 sectional garage door is all about thermal insulation, which makes it a recommended choice for energy efficient and even passive buildings. PRIME is the answer whenever energy efficiency is a priority. Thanks to thermally insulated panels and our sealing systems, we managed to eliminate heat loss in the most affected areas of the leaf in order to ensure parameters that allow sectional doors to maintain optimum temperature inside your garage.

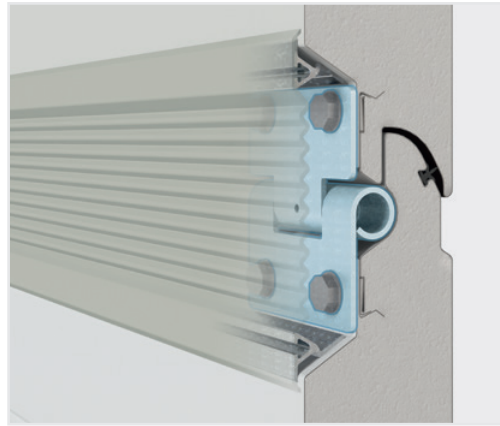


See the data sheet of the MakroTherm 2.0 sectional door.

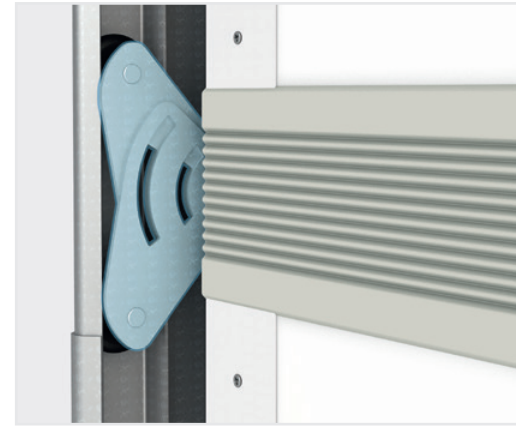
INNOVO PANEL The unique design of the **60 mm** thick INNOVO panel provides excellent thermal transmittance parameters. It also constitutes a great framework for the leaf. Special solutions, such as the 5-layer sheet bending system, ensure stable fastening of elements, which further increases the strength of our design.



Thermal transmittance factor of the INNOVO panel is $U_p = 0.33 \text{ W/m}^2 \times \text{K}$.



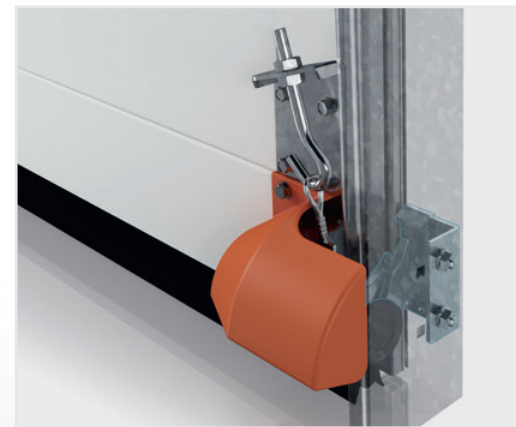
Concealed hinges – all hinges are hidden away under a flexible panel joint cover in the RAL 7040 or RAL 9002 colour.



Quiet operation – guiding roller holders fitted with special bushes made of self-lubricating plastic make the operation smoother and dampen the vibrations of the structure.



Double guiding rollers – double safety and smooth operation of the door.



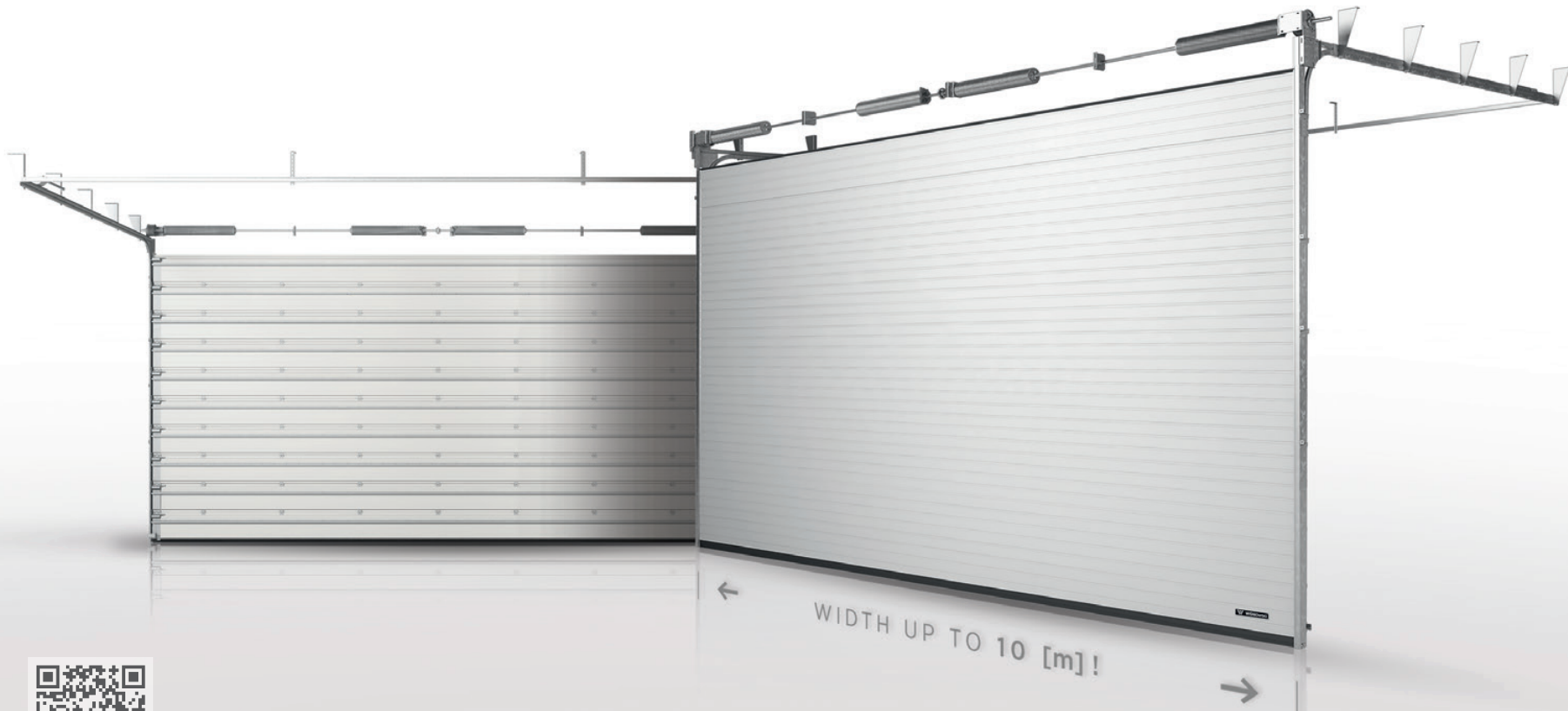
Safety device preventing the effects of load-bearing cable breakage with tension adjustment – facilitates the installation and adjustment process during service works.

MakroTherm XXL. High-calibre functionality.

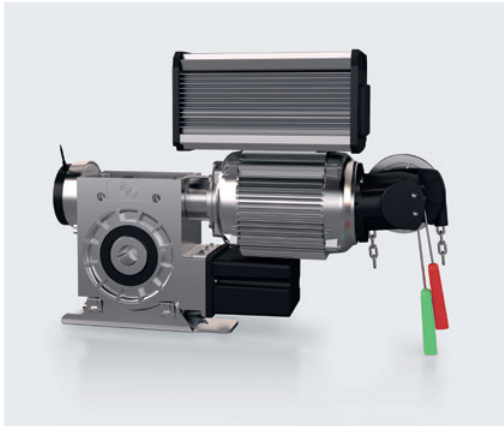
The large MakroTherm XXL industrial door is an innovative product which combines the tried and tested sectional door structure with a state-of-the-art leaf made of 60 mm thick INNOVO panels, with a thermal transmittance factor of $U = 0.33$ [W/m²xK].



SIZE



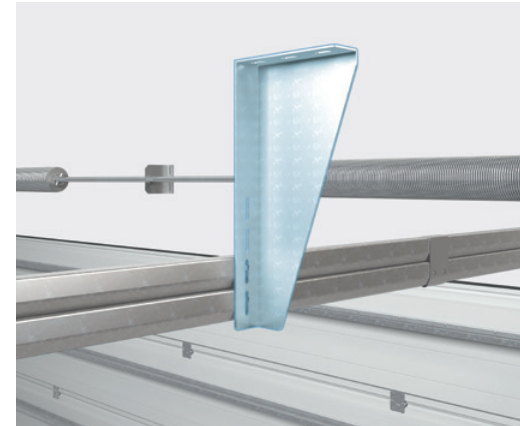
See the data sheet of the MakroTherm XXL sectional door.



As standard, the door is fitted with the GfA electric drive unit powered by 1x230 [V] or 3x400 [V]. The drive unit provides infinitely adjustable rotational speed, as well as the soft start and soft stop features.



Reinforced double guiding rollers support the increased door leaf weight and ensure quiet and smooth operation.



The conventional suspension system of the horizontal door tracks was replaced with special galvanized sheets adapted to the door dimensions.



Double guiding roller holders are reinforced with additional sheets.



The MakroTherm XXL doors are fitted as standard with the most effective clear opening protection device – a light curtain 2,668 mm in height. A densely packed photocell web prevents the clear door opening from being closed when an obstacle is present in the clear passage.



The inner side of each panel features galvanized steel omega panels that brace the leaf.

Track types for your hall.

Solutions for smooth movement.

WIŚNIEWSKI sectional doors can be installed in new and renovated buildings. The use of the appropriate track solutions allows the door to be adapted to the building requirements. Three track types are available for various installation conditions.





● MakroPro 2.0, MakroPro ALU 2.0

■ MakroPro 100 2.0, MakroPro ALU 100 2.0

◆ MakroTherm 2.0

▲ MakroTherm XXL



STL - standard tracks

● ■ ◆ ▲



LrH - tracks - torsion springs at the back

●



LH - low tracks - torsion springs at the back

●



LHp - low tracks

●



HL 2x45 - high tracks 2x45°

●



VL - vertical tracks

● ■ ◆



VLO - vertical tracks with a lowered shaft

● ■



VLO Dock - vertical tracks with a lowered shaft⁽¹⁾

●

⁽¹⁾ This type of tracks is only available with the MakroPro 2.0 door. For loading docks



Door adapted for individual infill (so-called façade door)

ELH - low tracks - torsion springs at the back ●



HL - high tracks ● ■ ◆ ▲



HLO - high tracks with a lowered shaft ● ■



⁽¹⁾ This type of tracks is only available with the MakroPro 2.0 door. For loading docks

HLO Dock - high tracks with a lowered shaft ⁽¹⁾ ●



STLK - standard tracks at an angle ●



HLK - high tracks at an angle ●



LHK - low tracks at an angle ●

Unconventional architecture requires exceptional creativity.

The MakroPro 2.0 ELH has been designed to be complemented with an individual infill. This means that from the outside the leaf can look exactly like in your design, your dreams and expectations. As it is a façade door, it seems rather natural that it should match the design of the façade.

The front of your house is covered with tiles, slate or plastic?

Why not blend the door in with the background to create an effect of a perfectly uniform façade. It provides great possibilities for architects and companies wanting to emphasize their attachment to beauty.





Intended for special areas

How far can you go when designing your own façade door? The leaf can have up to 20 m², and the thickness of the insulating material is as much as 4 centimetres. What is important, is that the door can be a part of a building without thermal insulation or with thermal insulation with a thickness from 70 to 220 millimetres.

The façade door is just a structure, but also so much more than just a structure – a perfect structure that can be complemented with the most extravagant infill. It should be noted here that the façade door is built on the framework of the MakroPro 2.0 or MakroPro Alu 2.0 door.



A door and façade in a single product. Just a structure, but also so much more than just a structure.

A façade door gives you an excellent combination of innovative design, perfect fit to your needs, and quality.

A garage door unlike all others – always innovative, always matching your needs.

When the door is closed, the leaf forms a uniform surface with the façade. The fact that a garage door is concealed there is almost imperceptible. Its presence becomes obvious only after you open the door. This process is a true spectacle – as if the wall of the building started to break and got pulled inside. It is truly impressive.

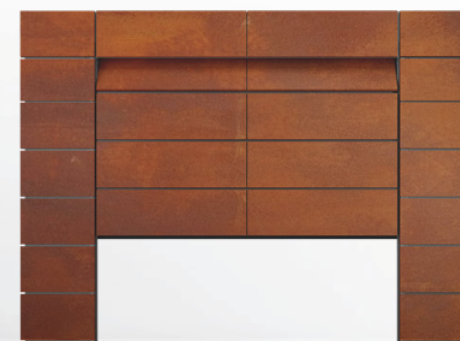
Example designs.



The front of façade and MakroPro 2.0 industrial door covered with wood.



The front of façade and MakroPro 2.0 industrial door covered with panels imitating concrete.



The front of façade and MakroPro 2.0 industrial door covered with Corten panels.

The tracks and the opening frames are one of the most crucial elements of the garage door.

In the case of the MakroPro 2.0 door series, we decided to make them using a 2 mm thick steel sheet. With a reinforced structure, the door operates quietly and reliably, even with heavy duty and long-term use. As standard, the door is fitted with a quiet SW6.80 or 9.60 drive unit, which ensures a soft start and stop.

Easy foot traffic without having to open the door

A wicket door is a convenient solution that enables foot traffic without the need to open up the entire door. The wicket door opening sensor ensures that automatic opening of the door is only allowed when the door is closed. The low threshold of the wicket door is an innovative solution that improves its functionality. The more ergonomic threshold is made of an aluminium section. The sectional door construction with a low threshold maintains its full stability.





Threshold – standard doors have a 100 mm high threshold. Optionally, a low threshold made of an aluminium section 21 mm high can be ordered (height including gasket).



Wicket door handle, appealing and durable – chrome-plated to protect it from adverse weather.



Plastic distance brackets – special termination of panels, which protects fingers from crushing when the door is closed.



Anti-panic lock – makes it possible to open the wicket door quickly and safely.



Wicket door opening sensor – prevents activation of the door when the wicket door is open. Installed in all wicket doors in doors with an electric drive unit.



Door closer – prevents heat loss and accidental opening.

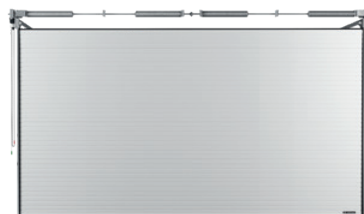
Comparison of technical specifications of the MakroPro 2.0 door series



	MakroPro 2.0	MakroPro ALU 2.0	MakroPro 100 2.0	MakroPro ALU 100 2.0
Leaf material	Steel	Aluminium	Steel	Aluminium
Panel thickness	40 mm	40 mm	40 mm	40 mm
Minimum number of cycles	25,000	25,000	100,000	100,000
Thermal transmittance factor U [W/m ² xK] for the panel	0.48	—	0.48	—
Thermal transmittance factor U [W/m ² xK] with a single / double glass	—	As provided on the door nameplate	—	As provided on the door nameplate
Watertightness (class)	2	2	2	2
Wind load resistance class	3	2 ⁽²⁾ , 3 ⁽³⁾ , 4 ⁽⁴⁾	3	2 ⁽²⁾ , 3 ⁽³⁾ , 4 ⁽⁴⁾
Air permeability class	4	4	4	4
Sound reduction index Rw [dB] without wicket door / with wicket door	23 / 24	23 / 25	23 / 24	23 / 25
Drive type / power supply type	GfA SE series / 1x230 V / 3x400 V		GfA SI series ⁽¹⁾ / 3x400 V	GfA SI series ⁽¹⁾ / 3x400 V
Safety devices (standard)	Cable break safety device (with cable tension adjustment), spring break safety device (for each spring), safety edge (Automatik drive unit), safe panel.		Cable break safety device (with cable tension adjustment), safety edge (Automatik drive unit), safe panel.	
Optional accessories	Various types of tracks, wicket door, low threshold for wicket door, auxiliary lock, ventilated panel, VISUAL glazing, small windows, glass: No-Scratch, GRAY, SATIN, SAN R, ventilation grilles, transmitter, magnetic card reader, code lock, heavy duty drive unit, motion sensor, anti-panic lock, code lock, signal light, leading photocells, light curtain, loose cable sensor, 50,000 cycle springs, 100,000 cycle springs.		Various types of tracks, wicket door, low threshold for wicket door, auxiliary lock, ventilated panel, VISUAL glazing, small windows, glass: No-Scratch, GRAY, SATIN, SAN R, ventilation grilles, transmitter, magnetic card reader, code lock, motion sensor, anti-panic lock, code lock, signal light, leading photocells, light curtain, loose cable sensor.	
Maximum door width / height mm	8,000 / 7,500	7,000 / 5,500	8,000 / 7,500	7,000 / 5,500
Available panel rib designs	Without ribs, high ribs, low ribs, V ribs	—	Without ribs, high ribs, low ribs, V ribs	—
Available panel structures	Woodgrain, Smoothgrain, Sandgrain, Silkline	—	Woodgrain, Smoothgrain, Sandgrain, Silkline	—
Standard RAL colours	1021 – yellow ⁽⁵⁾ , 2004 – pure orange, 3000 – red, 5010 – blue, 6002 – green ⁽⁵⁾ , 7016 – graphite, 7032 – grey ⁽⁵⁾ , 8014 – brown, 9006 – silver, 9007 – dark silver, 9016 – white			
Custom colours	Other RAL, special colours, including wood imitating colours	Other RAL	Other RAL, special colours, including wood imitating colours	Other RAL
Track type	STL, LrH, LH, LHp, ELH, HL, HLO, HLO Dock ⁽⁶⁾ , HL 2x45, VL, VLO, VLO Dock ⁽⁶⁾ , STLK, HLK, LHK		STL, HL, HLO, VL, VLO	STL, HL, HLO, VL, VLO

⁽¹⁾ Electric drive unit as standard. ⁽²⁾ For doors with single glass. ⁽³⁾ For doors with double glass. ⁽⁴⁾ For doors with double glass and bracing. ⁽⁵⁾ Not applicable to the MakroPro 2.0 and MakroPro 100 2.0. ⁽⁶⁾ This type of tracks is only available with the MakroPro 2.0 door. — Not applicable.

MakroTherm 2.0



	MakroTherm 2.0	MakroTherm XXL
Leaf material	Steel	Steel
Panel thickness	60 mm	60 mm
Minimum number of cycles	25,000	15,000
Thermal transmittance factor U [W/m ² ·xK] for the panel	0.33	0.33
Thermal transmittance factor U [W/m ² ·xK] with a single / double glass	—	—
Watertightness (class)	2	2
Wind load resistance class	4	4
Air permeability class	5	5
Sound reduction index Rw [dB]	24	24
Drive type / power supply type	GfA series SE / 1x230 V / 3x400 V	GfA SE 25.24 FU / 1x230 V / 3x400 V Standard accessory
Safety devices (standard)	Cable break safety device (with cable tension adjustment), spring break safety device (for each spring), safe panel, safety edge (Automatik drive unit).	Cable break safety device, spring break safety device (for each spring), light curtain, safe panel.
Standard accessories	50,000 spring cycles, various types of tracks, code lock, transmitter, magnetic card reader, motion sensor, warning light, acoustic signal, loose cable sensor.	15,000 spring cycles, various types of tracks, code lock, transmitter, magnetic card reader, motion sensor, warning light, acoustic signal.
Maximum door width / height mm	6,999 / 5,500	10,000 / 5,000
Available panel rib designs	Without ribs, high ribs, low ribs, V ribs	Low
Available panel structures	Woodgrain, Smoothgrain, Sandgrain, Silkline	Woodgrain
Standard RAL colours	9016 - white, 9006 - silver, 7016 - graphite	9016 - white
Custom colours	Other RAL, special colours, including wood imitating colours	—
Track type	STL, HL, VL	STL, HL





Welcome to the world of **WIŚNIEWSKI BR-100** industrial roller doors

Roller doors boast exceptional durability and reliability. And they are very easy to fit. Moreover, their installation does not require a lot of headroom. Combined with very good corrosion protection characteristics, they are a robust door solution that stands the test of time.



20 000



CYCLES

MINIMUM NUMBER OF CYCLES

20,000 minimum number of cycles for BR-100 doors.



2 CLASS

AIR PERMEABILITY

AIR PERMEABILITY

• class 2 – air permeability.



Rw 20 dB

SOUND ABSORPTION

SOUND ABSORPTION

The sound reduction index in BR-100 doors is R_w 20 [dB].



2 / 3 CLASS

WIND RESISTANCE

WIND RESISTANCE

Wind load resistance class:

- class 2 – doors without wind locks,
- class 3 – doors with wind locks.



Uw = 3,7 W/m²·K

THERMAL INSULATION

THERMAL INSULATION

Thermal transmittance factor is 3,7 [W/m²·K] for BR-100 with the dimensions of 8,000x6,000 mm.



2 CLASS

WATER RESISTANCE

WATER RESISTANCE

• class 2.



2 YEARS

WARRANTY

WARRANTY

All industrial products are covered with a **24 month** warranty with the possibility to extend it to **60 months**.



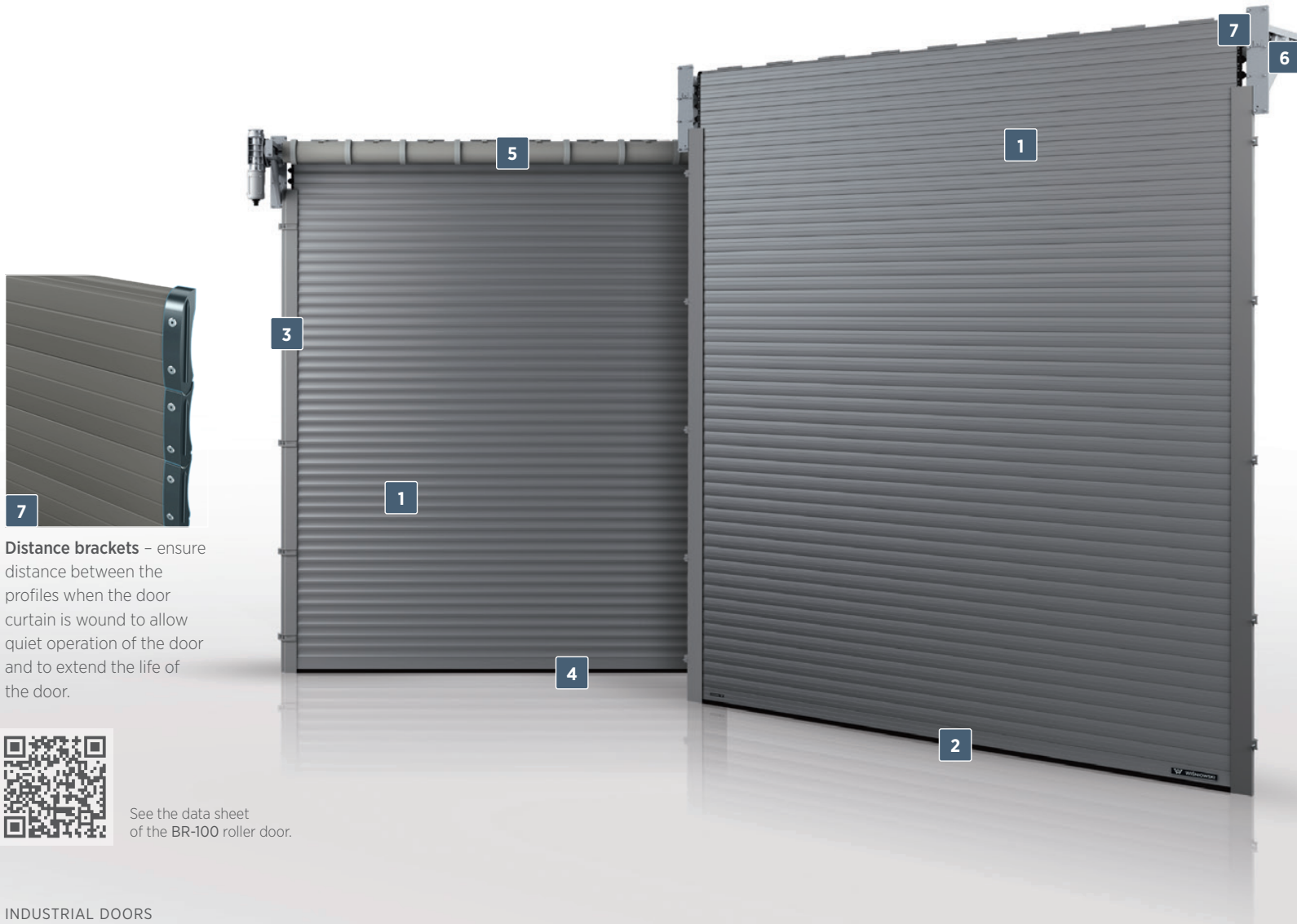
ACCESS CONTROL

ACCESS CONTROL

WIŚNIEWSKI industrial doors can be fitted with a number of solutions for full access control, e.g.: wireless, smartphone or microwave motion sensor control.

BR-100 roller doors. Comfort comes as standard.

BR-100 roller doors are a great product for facilities such as industrial halls, warehouses, as well as commercial and service buildings. Reliable and functional. Perfect for areas with little space under the ceiling, e.g. in facilities where gantry cranes operate.



Distance brackets – ensure distance between the profiles when the door curtain is wound to allow quiet operation of the door and to extend the life of the door.

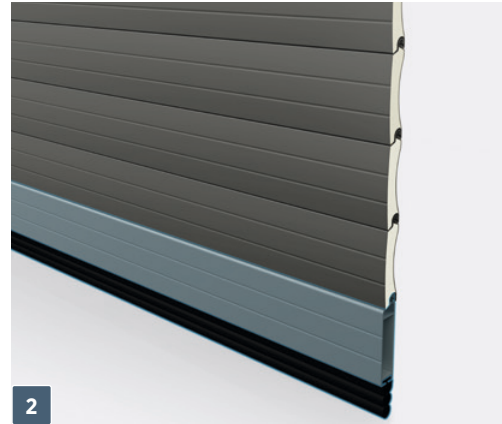


See the data sheet of the BR-100 roller door.

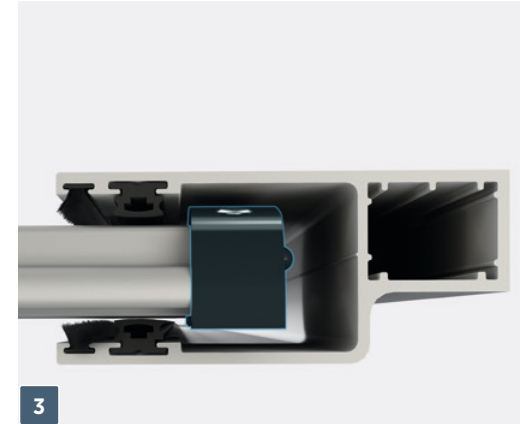


Door curtain – made of aluminium profiles 100 mm high and 25 mm thick infilled with freon-free polyurethane foam.

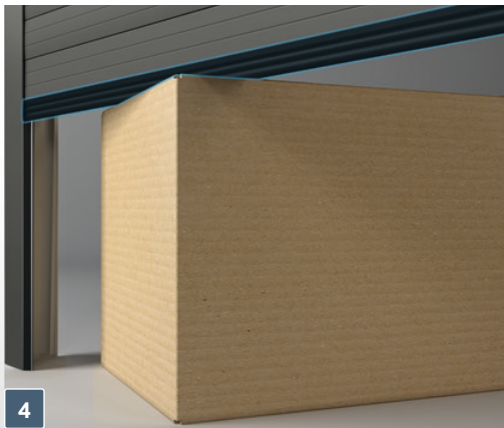
(A) – glazed single-wall aluminium profile,
(B) – ventilated single-wall aluminium profile.



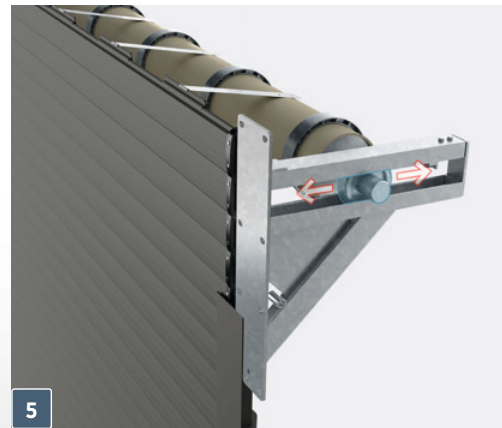
Bottom profile – aluminium reinforcing profile 115 mm high, painted in the door curtain colour as standard.



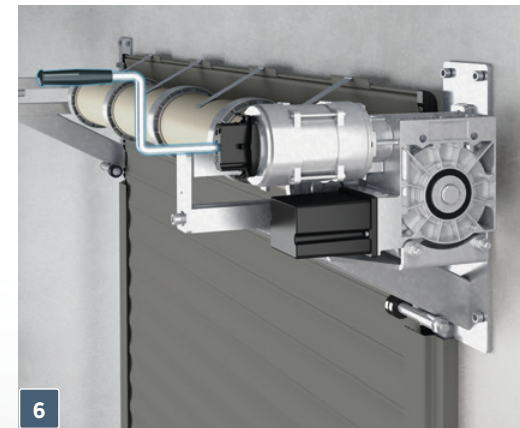
Aluminium tracks – installed inside the room along the lateral edges of the opening, they are fitted with brush gaskets and slides. Painted in the door curtain colour as standard.



Safety edge – optical sensors of the safety edge are installed in the bottom gasket of the door. When the door comes into contact with an obstacle, it stops and returns to the open position – standard with Automatik doors.



Moving shaft – as the moving shaft winds the curtain, it changes its position in relation to the lintel wall to keep the tracks of the moving curtain aligned.



Emergency door opening – lets you open the door manually in case of a power outage using the crank or the chain hoist provided on the actuator for emergency opening.

Safety – wind locks

Improved strength parameters were obtained, among other things, thanks to the use of solutions such as wind hooks. They are an extension of the profile distance brackets. When the door is operated, it travels in specially designed tracks, further reinforced with stabilizing holders. Wind locks are a standard accessory in door widths $S_o > 5,000$ mm. Doors narrower than $S_o \leq 5,000$ mm can be fitted with wind locks as an optional accessory. These solutions increase the wind load resistance of the BR-100 doors from class 2 to class 3.



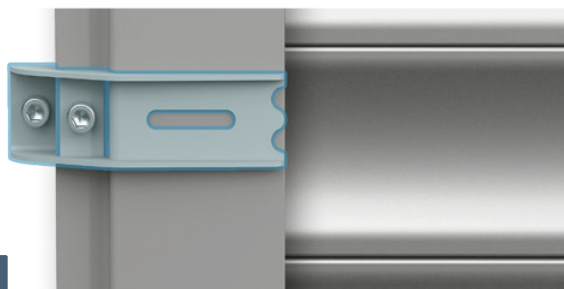
AIR
PERMEABILITY



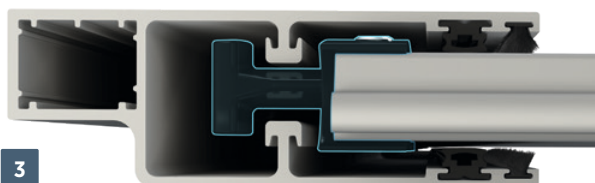
WIND
RESISTANCE



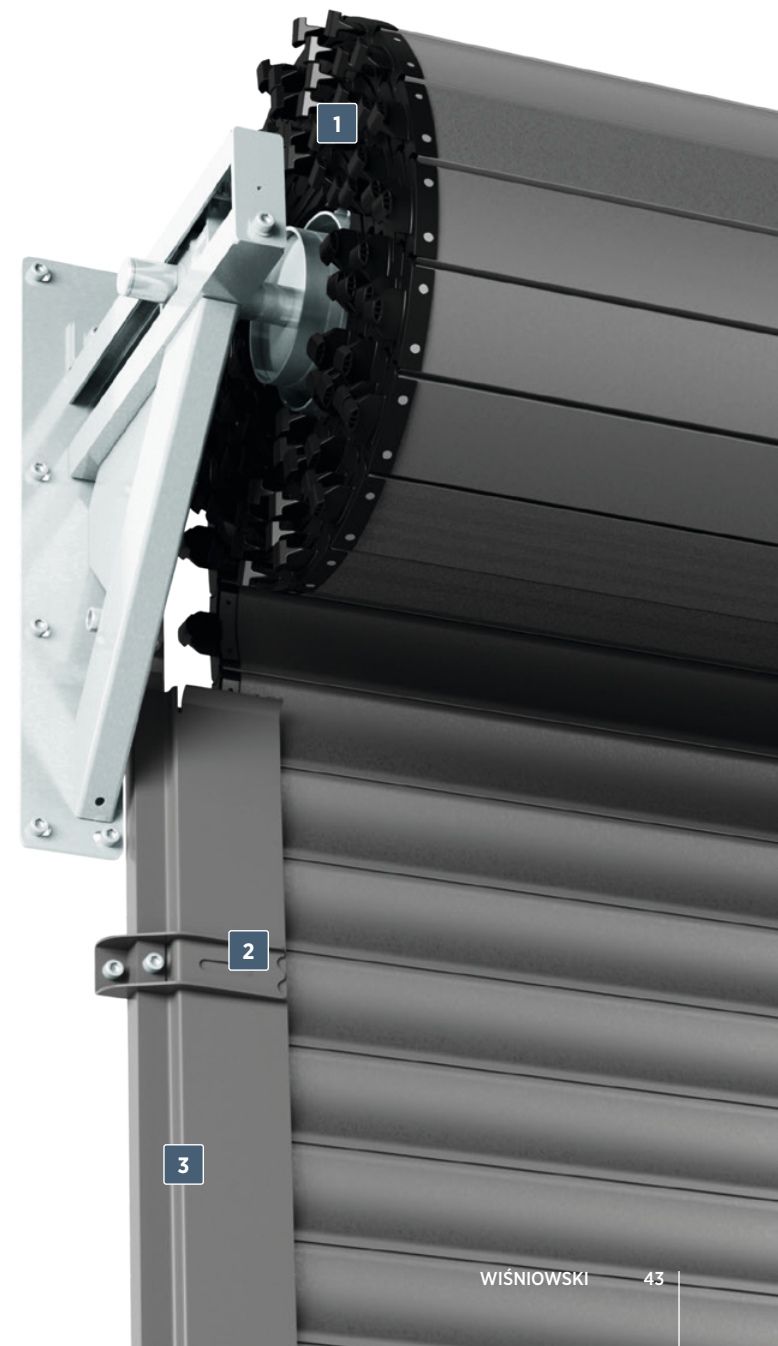
Wind locks – used in doors with $S_o > 5,000$ mm as a standard accessory. Installed **in each door profile**. Wind locks are also available with door widths $S_o \leq 5000$ mm as an optional accessory. Doors with wind locks feature class 3 wind load resistance.



Mounting brackets reinforcing door tracks – installed together with wind locks. They further brace and stabilize the tracks.



Aluminium reinforced tracks – for operation with wind locks. Installed along the lateral edges of the opening, they are fitted with brush gaskets and slides. Painted in the door curtain colour as standard.



Outdoor installation

The outdoor fitting option is practical whenever installation conditions prevent the door from being installed inside the room (e.g. when the lintel is too low or the side clearance is insufficient).

The precondition for installing the drive unit outdoors is protection of the system from adverse weather conditions with a box. The box protects the drive unit of the door and its electrical drive from dust, snow, and rain.

The box can also be used inside the room if the installation conditions permit.



Welcome to the world of **WIŚNIOWSKI industrial overhead doors**

Overhead sliding doors do not apply additional load to the roof and are the perfect choice for buildings where small lintels prevent the use of sectional and roller doors. When the lintel is not present, the doors can be fixed to the ceiling. Overhead sliding doors make it possible to close off very wide openings and their simple design makes them an incredibly versatile solution.





SAFETY

CE CERTIFICATE

The safety systems should first and foremost minimize the risk. Regardless of the method of operation, WIŚNIEWSKI doors ensure comfort, safety, and security. Our products are fully compliant with the PN-EN 13241-1 standard.



AIR PERMEABILITY

AIR PERMEABILITY

- class 1 – for the SlidePro door.



AN ECONOMICAL SOLUTION

AN ECONOMICAL SOLUTION

The simple construction contributes to both great reliability and price. With the number of pieces reduced to the minimum, this is a solution that ensures uncomplicated installation, as well as easy and reliable operation and maintenance.



WIND RESISTANCE

WIND RESISTANCE

- Resistance to wind load:
- class 4 – door with the T-10 sheet infill.
- SlidePro doors:
- class 4 – heights up to 2,600 mm,
 - class 3 – heights up to 2,940 mm,
 - class 2 – heights up to 3,410 mm,
 - class 1 – heights up to 4,000 mm.



UNIVERSAL INSTALLATION

UNIVERSAL INSTALLATION

Overhead doors do not apply additional load to the roof and, if the room has no lintel, the door can be installed to the ceiling.



THERMAL INSULATION

THERMAL INSULATION

- Thermal transmittance factor of the SlidePro doors:
- single-leaf doors:
 - 3,000 x 3,000 = **3.09** [W/m²xK].
 - 6,000 x 4,000 = **2.78** [W/m²xK].
 - double-leaf doors:
 - 3,000 x 3,000 = **2.56** [W/m²xK].
 - 6,000 x 4,000 = **2.07** [W/m²xK].



YEARS

WARRANTY

WARRANTY

All industrial products are covered with a **24 month** warranty with the possibility to extend it to **60 months**.



WATER RESISTANCE

WATER RESISTANCE

- class 1 – doors with the T-10 sheet infill,
- class 2 – SlidePro doors.

Overhead sliding door with the T-10 sheet infill.

A simple and economical solution.

Overhead sliding doors are a simple solution for halls where installation options are limited. They are practical in rooms where very wide openings have to be closed off.



Single-leaf door



Double-leaf door



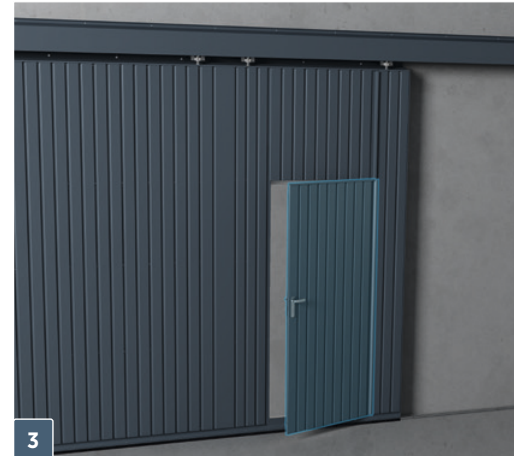
1

Running track cover - improves the aesthetics and protects the track from adverse weather conditions.



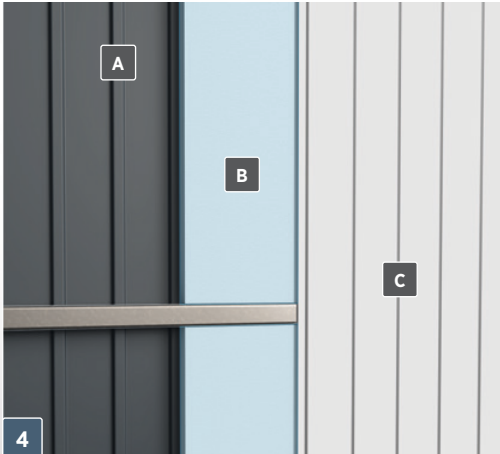
2

Rollers with bearings - the door is suspended with steel and steel polyamide sleeve guiding bearing rollers which ensure long and quiet operation.



3

Wicket door - outswing. Available with single- and double-leaf doors installed inside or outside the room. Clear passage width is 860 mm.



4

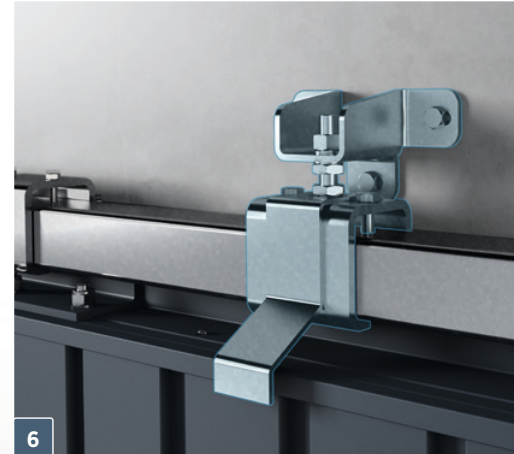
Door in a thermally insulated version - is infilled with polystyrene 30 mm thick (doors without the bottom guide rail) or 60 mm thick (doors with bottom guide rail) and 10 mm of PVC finishing material.

(A) - Trapezoidal steel sheet T-10,
 (B) - Polystyrene 30 mm,
 (C) - PVC panels or steel sheet.



5

Bottom guide rail - single-leaf overhead doors with the width $S_o > 6,000$ mm or higher than $H_o > 4,000$ mm are outfitted with an additional bottom guide rail. This solution provides the door with high stability and decreases the load on the building structure in the area of running track installation.



6

Suspension system - the door leaf is suspended with special holders that enable 2-plane adjustment. A large adjustment range makes it possible to eliminate small imperfections of the lintel opening. When the lintel is not present, the door can be fixed directly to the ceiling.

SlidePro overhead sliding doors.

Maximum functionality.

The SlidePro is an innovative product which combines the tried and tested structure of overhead sliding doors with a modern leaf made of steel panels infilled with polyurethane foam used in sectional doors. With this construction, the SlidePro obtained exceptional aesthetic qualities which perfectly match the latest architectural trends of industrial construction.



Single-leaf door

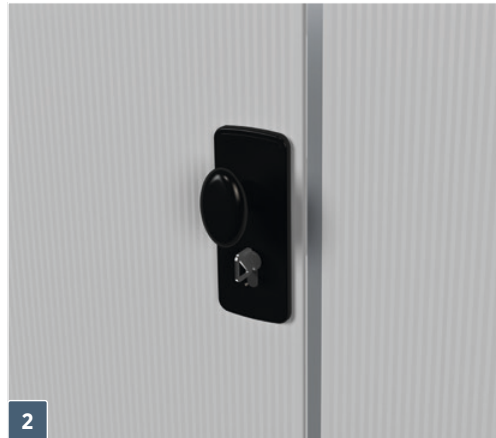


See the data sheet of the SlidePro overhead sliding door.

Double-leaf door



1
Door leaf – made of 40 mm thick sectional panels and filled with freon-free polyurethane foam. Thermal transmittance factor of the panel $U_p = 0.48$ [W/m²xK].



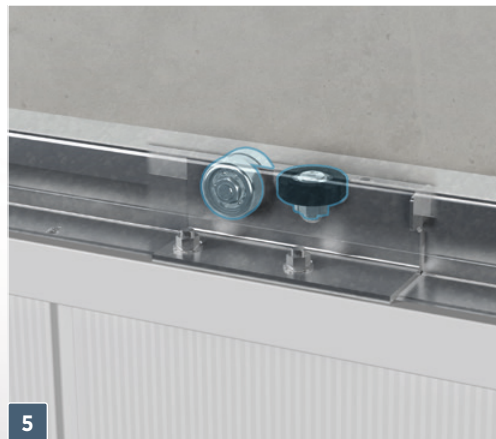
2
Lock – both active and passive leafs are bolted in two points (in the top and bottom section). The active leaf is fitted with a plastic handle from the outside and from the inside, a single-side lock cylinder accessible from the outside, and a lock operated with a latch from the inside.



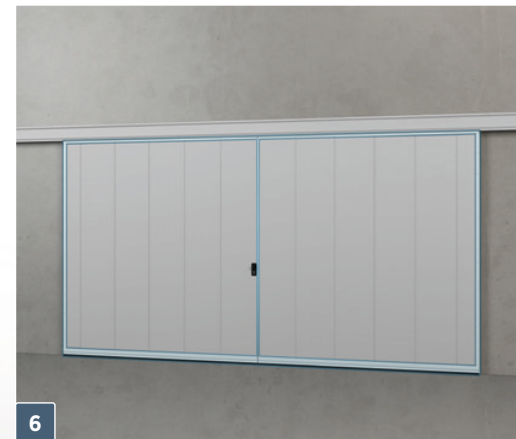
3
Running track – made of a hot-dip galvanized steel channel section. The running track is fixed to holders enabling 2-plane adjustment. The ends of the track are fitted with rubber bumpers that prevent the leaf from sliding out.



4
Running track cover – the running track is fitted as standard with a steel sheet cover coated with polyester paint in the door colour.



5
Rollers with bearings – the door is suspended with steel and steel polyamide sleeve guiding bearing rollers which ensure long and quiet operation.



6
Top, bottom and side seals – a brush seal ensures optimal sealing in the lintel and floor section of the door. EPDM rubber gaskets act as side seals.

Welcome to the world of **WIŚNIOWSKI double-leaf industrial doors**

The PRESTO 50 double-leaf door is intended for use in uninsulated buildings, utility buildings, industrial buildings, as well as technical buildings (without direct contact with food). The door has proven itself in areas with non-standard installation conditions.

The door has
been tested by
the Building
Research Institute





SAFETY

CE CERTIFICATE

The safety systems focus on minimizing all traces of risk. Regardless of the method of operation, WIŚNIOWSKI doors ensure comfort and safety. Our products are fully compliant with the PN-EN 13241-1 standard.



AIR PERMEABILITY

AIR PERMEABILITY

• class 4 – for the PRESTO 50 double-leaf door.



AN ECONOMICAL SOLUTION

AN ECONOMICAL SOLUTION

The proven structure contributes to both great reliability and price. With the number of pieces reduced to the minimum, this is a solution that ensures uncomplicated installation, as well as easy and reliable operation and maintenance.



WIND RESISTANCE

WIND RESISTANCE

• class 2 – for the PRESTO 50 double-leaf door.



EASY FITTING

EASY FITTING

Simple and easy fitting of the double-leaf door both in the opening and in front of the opening is cost- and time-effective.



WATER RESISTANCE

WATER RESISTANCE

• class 2 – for the PRESTO 50 double-leaf door.



WARRANTY

WARRANTY

All industrial products are covered with a **24 month** warranty with the possibility to extend it to **60 months**.



FUNCTIONALITY

FUNCTIONALITY

It is a conventional solution in terms of functionality. The PRESTO 50 will prove itself where installation conditions prevent the fitting of a sectional or roller door.

PRESTO 50 doors. A new dimension of functionality.

The PRESTO 50 combines technological perfection, durability, and functionality, which is key for business. Take full advantage of the benefits of the PRESTO 50 door in all the areas that call for professional solutions.



See the technical data sheet of the PRESTO 50 double-leaf door.



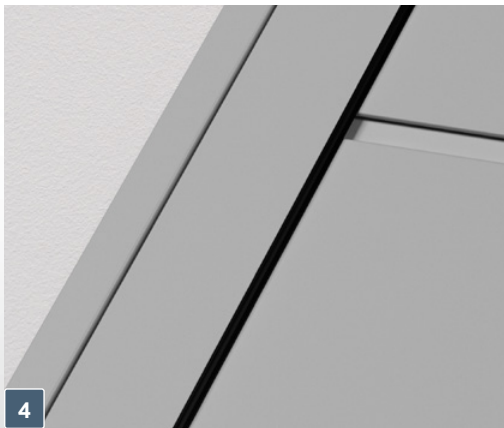
1
Leaf infill – panels made of 40 mm steel sheet, galvanized and coated with polyester paint on both sides, infilled with high density PU foam $g=42 \text{ kg/m}^3$ without HCFC.



2
Opening frame – single-chamber steel sections without a thermal break based on the Forster Presto system. Both the opening frame and the door leaf are made of sections 1.5 mm thick. The sections are joined by welding.



3
Bolting – as standard, the active leaf features 1-point bolting – flush-mounted lock for $S_o \leq 2,500$ and $H_o \leq 2,500$ mm. Additionally, in doors with $S_o > 2,500$ or $H_o > 2,500$ mm, as well as on customer's request, an additional top dead-bolt is fitted. The passive leaf features 2-point bolting (top + bottom) actuated with a rotating lever.



4
Sealing – the door is sealed along its circumference with hopper gaskets. The gasket is installed on the inside of the leaf, which ensures the required tightness and noise dampening. There are panel joint seals between the panels.



5
Hinges – the door is fitted with welded steel hinges with bearings (non-adjustable). The welded hinge connection with the opening frame ensures robust fixation, and eliminates leaf dropping and the need to adjust the leaves.



6
Support foot (door stop) – a conventional solution contributing to door functionality and safety. Door stops in the PRESTO 50 door make it easier to enter and exit the building.

MODELS



PRESTO 50 double-leaf door with a wicket door
- the door with a height of $H_o \geq 3,000$ mm or fitted with a wicket door also features a horizontal reinforcing crossbar at the height of 2,087 mm



PRESTO 50 double-leaf door infilled with panels without ribs



PRESTO 50 double-leaf door infilled with panels with high ribs

AVAILABLE **VERSIONS**



PRESTO 50 double-leaf door with portholes - type A-3
- available portholes: A-1 and A-3



PRESTO 50 double-leaf door with panels with an aluminium panel glazing



PRESTO 50 double-leaf door with K-2 ventilation grilles
- available ventilation grilles: K-1, K-2 and K-3



PRESTO 50 double-leaf door fully infilled with a ventilation shutter made of a steel sheet 1 mm thick

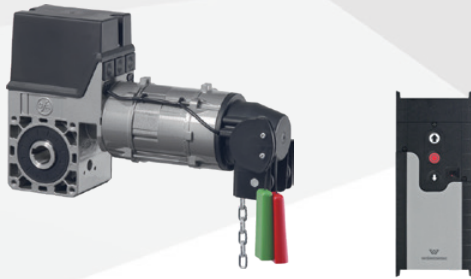
Automatic operating units for industrial gates.

The choice of the proper drive unit ensures reliable operation of the door. Adapted to the individual needs of the investors, each door we manufacture is unique and meets different expectations. This is why we configured proven automatic operating unit kits which provide the choice of a suitable solution, while ensuring reliable operation for many years to come. These kits can be expanded with access control elements, including the WBox smart technology with the Ri-Co controller.





DRIVE UNIT KITS FOR INDUSTRIAL DOORS



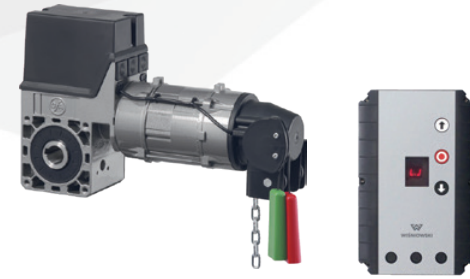
Elektromat SE Totmann + TS 959 central control unit

- drive unit, mounted on the shaft,
- electronic limit switch available from the central control unit level,
- motor integrated with the self-locking speed reducing gear with die-cast housing,
- built-in motor thermal protection,
- central control unit power supply: 3x400 [V],
- TS 959 central control unit with an integrated up (with impulse maintenance)-stop-down (without impulse maintenance) switch,
- emergency opening with a chain hoist, with chain length adapted to the door height.
- drive unit in the IP54 version,
- digital display for setting the available functions,
- operation cycle counter.



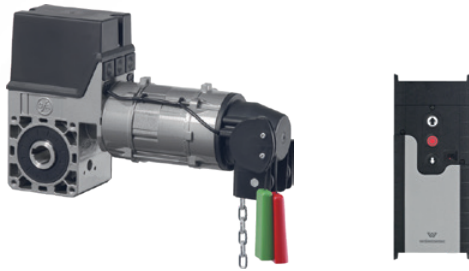
Elektromat SE Automatik + TS 970 central control unit

- drive unit, mounted on the shaft,
- electronic limit switch available from the central control unit level,
- motor integrated with the self-locking speed reducing gear with die-cast housing,
- gear with a gripping unit and an electromagnetic brake,
- built-in motor thermal protection,
- central control unit power supply: 3x400 [V],
- TS 970 central control unit or TS 971 central control unit with a WSD module – wireless signal from the safety edge,
- automatic control with an integrated up (with impulse maintenance)-stop-down (without impulse maintenance) switch,
- emergency opening with a chain hoist, with chain length adapted to the door height,
- drive unit in the IP54 or IP65 version,
- safety edge sensors,
- spiral cable,
- integrated automatic closing feature,
- digital display for setting the available functions,
- operation cycle counter,
- expandable.



Elektromat SE Automatik S + TS 981 central control unit

- drive unit, mounted on the shaft,
- electronic limit switch available from the central control unit level,
- motor integrated with the self-locking speed reducing gear with die-cast housing,
- built-in motor thermal protection,
- central control unit power supply: 3x400 [V],
- TS 981 central control unit,
- automatic control with an integrated up (with impulse maintenance)-stop-down (without impulse maintenance) switch,
- emergency opening with a chain hoist, with chain length adapted to the door height,
- drive unit in the IP54 or IP65 version,
- safety edge sensors,
- spiral cable,
- built-in automatic closing feature,
- digital display for setting the available functions,
- operation cycle counter,
- expandable,
- supports connection of the signal from the smoke extraction and ventilation system,
- compatible with traffic control with signal lights.



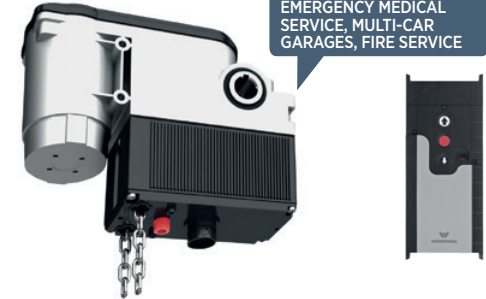
Elektromat SE Totmann 230 + TS 959 central control unit

- drive unit, mounted on the shaft,
- electronic limit switch available from the central control unit level,
- motor integrated with the self-locking speed reducing gear with die-cast housing,,
- built-in motor thermal protection,
- central control unit power supply: 1x230 [V],
- TS 959 central control unit,
- controller with an integrated up (with impulse maintenance)-stop-down (without impulse maintenance) switch,
- emergency opening with a chain hoist, with chain length adapted to the door height,
- drive unit in the IP54 version,
- digital display for setting the available functions,
- operation cycle counter.



Elektromat SE Automatik 230 + TS 970 central control unit

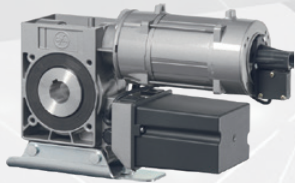
- drive unit, mounted on the shaft,
- electronic limit switch available from the central control unit level,
- motor integrated with the self-locking speed reducing gear with die-cast housing,
- gear with a gripping unit and an electromagnetic brake,
- built-in motor thermal protection,
- central control unit power supply: 1x230 [V],
- TS 970 central control unit,
- automatic control with an integrated up (with impulse maintenance)-stop-down (without impulse maintenance) switch,
- emergency opening with a chain hoist, with chain length adapted to the door height,
- drive unit in the IP54 version,
- safety edge sensors,
- spiral cable,
- integrated automatic closing feature,
- digital display for setting the available functions,
- operation cycle counter,
- expandable.



Elektromat SE Automatik FU + TS 970 central control unit

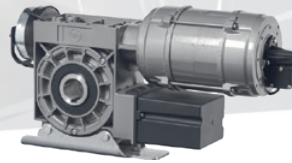
- drive unit with an inverter, mounted on the shaft,
- electronic limit switch available from the central control unit level,
- motor integrated with the self-locking speed reducing gear with die-cast housing,
- emergency opening with a chain hoist, with chain length adapted to the door height,
- built-in motor thermal protection,
- central control unit power supply: 1x230 [V] or 3x400 [V],
- TS 970 central control unit, TS 971 central control unit with a WSD module – wireless signal from the safety edge (option) or TS 981 central control unit (option),
- automatic control with an integrated up (with impulse maintenance)-stop-down (without impulse maintenance) switch,
- infinitely adjustable opening and closing speed,
- soft START and STOP,
- slowdown before end positions,
- drive unit in the IP54 or IP65 version,
- safety edge sensors,
- spiral cable,
- integrated automatic closing feature,
- digital display for setting the available functions,
- operation cycle counter,
- expandable.

DRIVE UNIT KITS FOR INDUSTRIAL DOORS



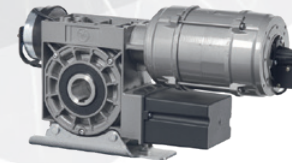
Elektromat SI Totmann + TS 959 central control unit

- drive unit, mounted on the shaft,
- electronic limit switch available from the central control unit level,
- motor integrated with the self-locking speed reducing gear with die-cast housing,
- gear with a gripping unit and an electromagnetic brake,
- built-in motor thermal protection,
- central control unit power supply: 3x400 [V],
- TS 959 central control unit with an integrated up (with impulse maintenance)-stop-down (without impulse maintenance) switch,
- emergency opening with an emergency crank or chain hoist with chain length adapted to the door height,
- drive unit in the IP54 version,
- digital display for setting the available functions,
- operation cycle counter.



Elektromat SI Automatik + TS 970 central control unit

- drive unit, mounted on the shaft,
- electronic limit switch available from the central control unit level,
- motor integrated with the self-locking speed reducing gear with die-cast housing,
- gear with a gripping unit and an electromagnetic brake,
- built-in motor thermal protection,
- central control unit power supply: 3x400 [V],
- TS 970 central control unit or TS 971 central control unit with a WSD module – wireless signal from the safety edge (option),
- automatic control with an integrated up (with impulse maintenance)-stop-down (without impulse maintenance) switch,
- emergency opening with an emergency crank or chain hoist with chain length adapted to the door height,
- drive unit in the IP54 or IP65 version,
- safety edge sensors,
- spiral cable,
- integrated automatic closing feature,
- digital display for setting the available functions,
- operation cycle counter,
- expandable.



Elektromat SI Automatik S + TS 981 central control unit

- drive unit, mounted on the shaft,
- electronic limit switch available from the central control unit level,
- built-in motor thermal protection,
- central control unit power supply: 3x400 [V],
- TS 981 central control unit,
- automatic control with an integrated up (with impulse maintenance)-stop-down (without impulse maintenance) switch,
- emergency opening with an emergency crank or chain hoist with chain length adapted to the door height,
- drive unit in the IP54 or IP65 version,
- safety edge sensors,
- spiral cable,
- integrated automatic closing feature,
- digital display for setting the available functions,
- operation cycle counter,
- expandable,
- supports connection of the signal from the smoke extraction and ventilation system,
- compatible with traffic control with signal lights.



Argo Automatik BFT* with an integrated central control unit

- drive unit, mounted on the shaft,
- electronic limit switch available from the drive unit level,
- main power supply 1x230 [V],
- motor power supply 24 [V] DC,
- auto selection of the operating parameters,
- integrated central control unit,
- soft start/stop with adjustment,
- photocells included,
- pendant control with up-stop-down buttons (with impulse maintenance),
- emergency quick drive unit disengagement via cables with length adapted to the height of the door,
- integrated LED signal light,
- thermal protection in the drive unit winding,
- drive unit in the IP40 version,
- Automatik operation mode,
- overcurrent obstacle detection,
- automatic closing feature,
- digital display for setting the available functions,
- operation cycle counter,
- integrated BFT radio receiver,
- compatible with emergency power supply batteries,
- expandable,
- supports connection of the signal from smoke extraction and ventilation systems.

* - drive unit intended for the MakroPro 2.0 sectional doors and the suspended sliding doors.



Elektromat SW Automatik + TS 970 central control unit

- drive unit with an inverter, mounted on the end of the running track,
- steel rail with a chain, carriage and a disengagement system installed,
- electronic limit switch available from the central control unit level,
- motor integrated with the self-locking speed reducing gear with die-cast housing,
- built-in motor thermal protection,
- central control unit power supply: 1x230 [V] or 3x400 [V],
- TS 970 or TS 981 (option) central control unit,
- automatic control with an integrated up (with impulse maintenance)-stop-down (without impulse maintenance) switch,
- infinitely adjustable opening and closing speed,
- soft START and STOP,
- slowdown before end positions,
- drive unit in the IP54 or IP65 version,
- safety edge sensors,
- spiral cable,
- integrated automatic closing feature,
- digital display for setting the available functions,
- operation cycle counter,
- expandable.



base+ Automatik SOMMER



tiga+ Automatik SOMMER

- rail drive unit,
- steel track with a chain,
- electronic limit switch and mechanical restrictor,
- main power supply 1x230 [V],
- 24 [V] DC motor integrated with the carriage,
- auto selection of the operating parameters,
- soft start/stop with adjustment,
- photocells included,
- emergency quick carriage disengagement,
- integrated LED signal light,
- thermal protection in the drive unit winding,
- automatic closing feature,
- drive unit in the IP21 version,
- Automatik operation mode,
- overcurrent obstacle detection,
- integrated SOMMER radio receiver,
- compatible with traffic control** with signal lights,
- supports connection of the signal from the smoke extraction and ventilation system**,
- expandable.

** - forced feature, only available with the tiga+ drive unit.



ACCESSORIES FOR AUTOMATIC OPERATING UNITS FOR **INDUSTRIAL DOORS**.

Extra features offered by the automatic door equipment increase safety standards and provide higher comfort.

SG 2668 safety light curtain



SG 1928 safety light curtain



Safety light curtain

Protects the clear passage and reacts if obstacles are present. The light curtain is recommended for doors with an electric drive in the Automatik versions installed in general access areas. The light curtain comprises a receiver and a transmitter. IP67 protection rating. The SG 2668 curtain can be used as the main safety device for the closing edge of the door.



IP 65 controller

Drive unit with an IP 65 rating is suitable for areas with increased humidity, where condensation on electric circuit elements can occur. The kit includes a special controller (TS 970, TS 971, TS 981) with a heater 20 [W], thermostat, main switch and a plug.



Backup power supply

The backup power supplies ensure uninterrupted power supply and protect the equipment against the majority of issues related to loss of voltage. When a power outage is detected, the backup power supply is automatically activated.



Safety switch

stops the door immediately in emergency.



Acoustic signal

when the drive unit operates, it generates an acoustic signal that warns about the door movement. IP 65 protection rating.



Photocells

prevent uncontrolled door leaf movement when an obstacle is present within the clear passage



Safety photocells

prevent uncontrolled door leaf movement when an obstacle is present within the clear passage. The door with leading photocells does not contact the obstacle on detection.



LED warning light

warning function. Orange blinking light indicates that the door is operating.



LED signal light

the signal light includes two lights, red and green, which make it possible to organize traffic through the door or indicate the door status.

Smart technologies



Control the door with your smartphone

The door control feature is always in your phone – keys and remote controls are a thing of the past. You do not have to remember to take them with you from your home or office. With the wBox app, which is dedicated to the Ri-Co controller, you can now control up to a dozen or so doors and gates at the same time, even if they are out of your sight. Get full control, security, and comfort. With three Ri-Co versions, you can choose the level of control you need. The basic version controls only the opening and closing of the door or the gate. The extended versions make it possible to check the door status. With this solution, you can rest assured that your business is safe. Just activate the wBox app available on iOS and Android. Enjoy the mobility.

Ri:Co



Ri-Co (basic version)

The controller opens and closes the door.



Ri-Co Pro (advanced version)

The controller opens and closes the door and informs the user about the door status (open / closed / intermediate status).



Ri-Co Pro Set * (extended advanced version)

Includes the Ri-Co Pro controller with external magnetic limit switches, which provide information about the status of the door. The device can be paired with the Automatik SOMMER rail drive units.

Access control system



External code keypad

Lock enabling control of the door with a code. For outdoor installation. IP67 protection rating. Aluminium housing body and buttons.



Internal code keypad

Lock enabling control of the door with a code. For indoor installation. IP54 protection rating. Plastic housing body, rubber buttons.



Proximity card reader

The reader enables controlled access to the door with proximity cards or fobs (max. 120 fobs/cards). IP 67 protection rating.



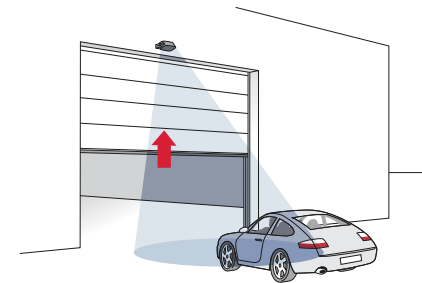
Induction loop detector

The detector is a 2-channel device which detects vehicle presence in the detection area. Enables autonomous operation of the door.



Motion sensor

The microwave motion sensor enables door control thanks to the detection of objects that are moving closer or away. Fitted as standard with a remote control transmitter for programming the sensor from the user level. For indoor and outdoor installation. Detects the direction of the approaching vehicle or people, it can also differentiate between vehicles, people, and animals. IP 65 protection rating.



Colours and structures in industrial doors

Colour is the first feature our senses react to. We made sure that each of our customers can find the colour they are looking for. Our doors can be manufactured in RAL palette colours and in wood effect colours – together with our range of structures and extra decorative elements, this gives you hundreds of options for a tailored solution.



RAL palette colours,
film coatings with wood,
steel and other surface effects.

ALU SECTIONAL DOORS



ALUMINIUM PANEL



SECTIONAL AND DOUBLE-LEAF DOORS

WITHOUT RIBS	—	—	—	● ○	● ◆ ○	●	●	—	—	●	● ◆ ○
HIGH RIBS	—	—	—	●	● ◆ ○	●	●	—	—	●	● ◆ ○
LOW RIBS	●	●	●	● ◆	●	●	● ◆	—	●	● ◆ ■	—
V RIBS	—	—	—	—	●	—	◆	● ◆	—	—	—

● MakroPro 2.0 | MakroPro 100 2.0 ▲ MakroPro ALU 2.0 | MakroPro ALU 100 2.0 ◆ MakroTherm 2.0 ■ MakroTherm XXL ○ PRESTO 50 — Colour unavailable

SECTIONAL AND DOUBLE-LEAF DOORS



WITHOUT RIBS	● ◆ ○	●	● ◆ ○	●	● ◆ ○	● ◆ ○	● ◆ ○	● ◆ ○	● ◆ ○	● ◆ ○	● ◆ ○	● ◆ ○	● ◆ ○	● ◆ ○	● ◆ ○
HIGH RIBS	● ◆	●	● ◆ ○	●	● ◆ ○	●	●	●	●	●	●	●	●	●	●
LOW RIBS	—	●	—	●	—	—	—	—	—	—	—	—	—	—	—
V RIBS	—	—	—	—	—	—	—	—	—	—	—	—	—	—	—

● MakroPro 2.0 | MakroPro 100 2.0 ▲ MakroPro ALU 2.0 | MakroPro ALU 100 2.0 ◆ MakroTherm 2.0 ■ MakroTherm XXL ○ PRESTO 50 — Colour unavailable

Anthracite Quartz 436-1014
smoothgrain

AntEAK 3241002-195
smoothgrain

Dark Oak 2052089-167
smoothgrain

Swamp Oak 3167004-167
smoothgrain

Summer Cherry 3214009-195
smoothgrain

Macore 3162002-167
smoothgrain

Oregon 1192001-167
smoothgrain

Sapelli 2065021-167
smoothgrain

Sienna Noce 49237 PN
smoothgrain

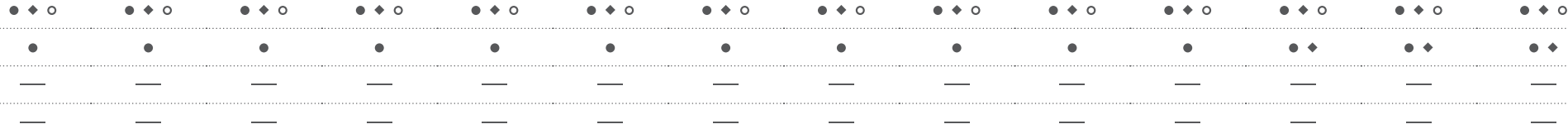
Sienna PL 49254-015
smoothgrain

Sienna Rosso 49233 PR
smoothgrain

Irish Oak 3211305-1148
smoothgrain

Winchester 49240 XA
smoothgrain

Black Cherry 3202001-167
smoothgrain



All sectional garage door panels with Woodgrain and Silkline structure are available in RAL palette colours.



SECTIONAL AND DOUBLE-LEAF DOORS



WITHOUT RIBS	● ◆ ○	● ◆ ○	● ◆ ○	● ◆ ○	● ◆ ○	● ◆ ○	● ◆ ○	● ◆ ○	● ◆ ○	● ◆ ○	● ◆ ○	● ◆ ○	● ◆ ○
HIGH RIBS	● ◆	● ◆	● ◆	● ◆	● ◆	● ◆	● ◆	● ◆	● ◆	● ◆	● ◆	● ◆	● ◆
LOW RIBS	—	—	—	—	—	—	—	—	—	—	—	—	—
V RIBS	—	—	—	—	—	—	—	—	—	—	—	—	—

● MakroPro 2.0 | MakroPro 100 2.0 ▲ MakroPro ALU 2.0 | MakroPro ALU 100 2.0 ◆ MakroTherm 2.0 ■ MakroTherm XXL ○ PRESTO 50 — Colour unavailable



Anthracite Quartz Mat F470-1014
smoothgrain

Anthracite quartz F436-1014
smoothgrain

Umbra F436-60657
smoothgrain

Fenstergrau F436-6066
smoothgrain

Cremeweiss F456-6001
smoothgrain

Anthrazit F436-6003
smoothgrain

Dark grey silk 4367003
smoothgrain

Black RAL 9005
silkline

Golden Oak 2178001-167
smoothgrain

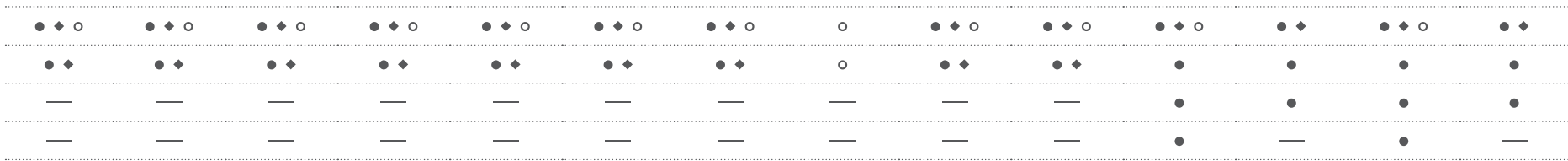
Walnut 2178007-167
smoothgrain

Modern White
silkline

Modern White
woodgrain

Modern Black
silkline

Modern Black
woodgrain



All sectional garage door panels with Woodgrain and Silkline structure are available in RAL palette colours.



ROLLER DOORS



AW 100 ALUMINIUM PROFILE



OVERHEAD SLIDING DOORS



TRAPEZIUM T-10 SHEET



WITHOUT RIBS



V RIBS



❖ BR-100 ★ Overhead sliding Ⓢ Overhead sliding SlidePro — Colour unavailable

All SlidePro door panels with Woodgrain and Silkline structure are available in RAL palette colours.



Textures



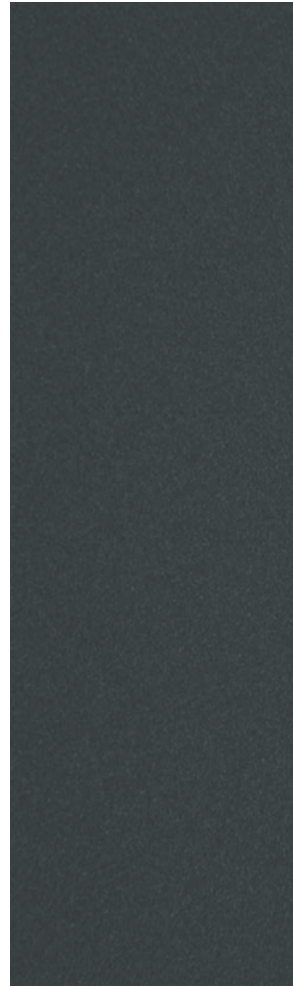
Woodgrain



Smoothgrain



Sandgrain



Silkline



Silkline, panel with V ribs

INSPIRATION





TRANSPORT AND CONSTRUCTION SERVICES

MakroPro 2.0 doors with aluminium glazings brightening up the interior.

CAR AND TRUCK SERVICE WORKSHOP

MakroPro ALU 2.0 doors.





WISN

INSPIRATION

MOT TEST STATION

MakroPro ALU 2.0 doors.





MOT TEST STATION

MakroPro ALU 2.0 door (as seen from the inside).

INSPIRATION

CAR SHOWROOM

MakroPro ALU 2.0 door.



CAR SERVICE WORKSHOP

MakroPro ALU 2.0 door.



STATE FIRE DEPARTMENT IN NOWY SĄCZ

MakroPro 2.0 doors with aluminium glazings
brightening up the interior.





INSPIRATION

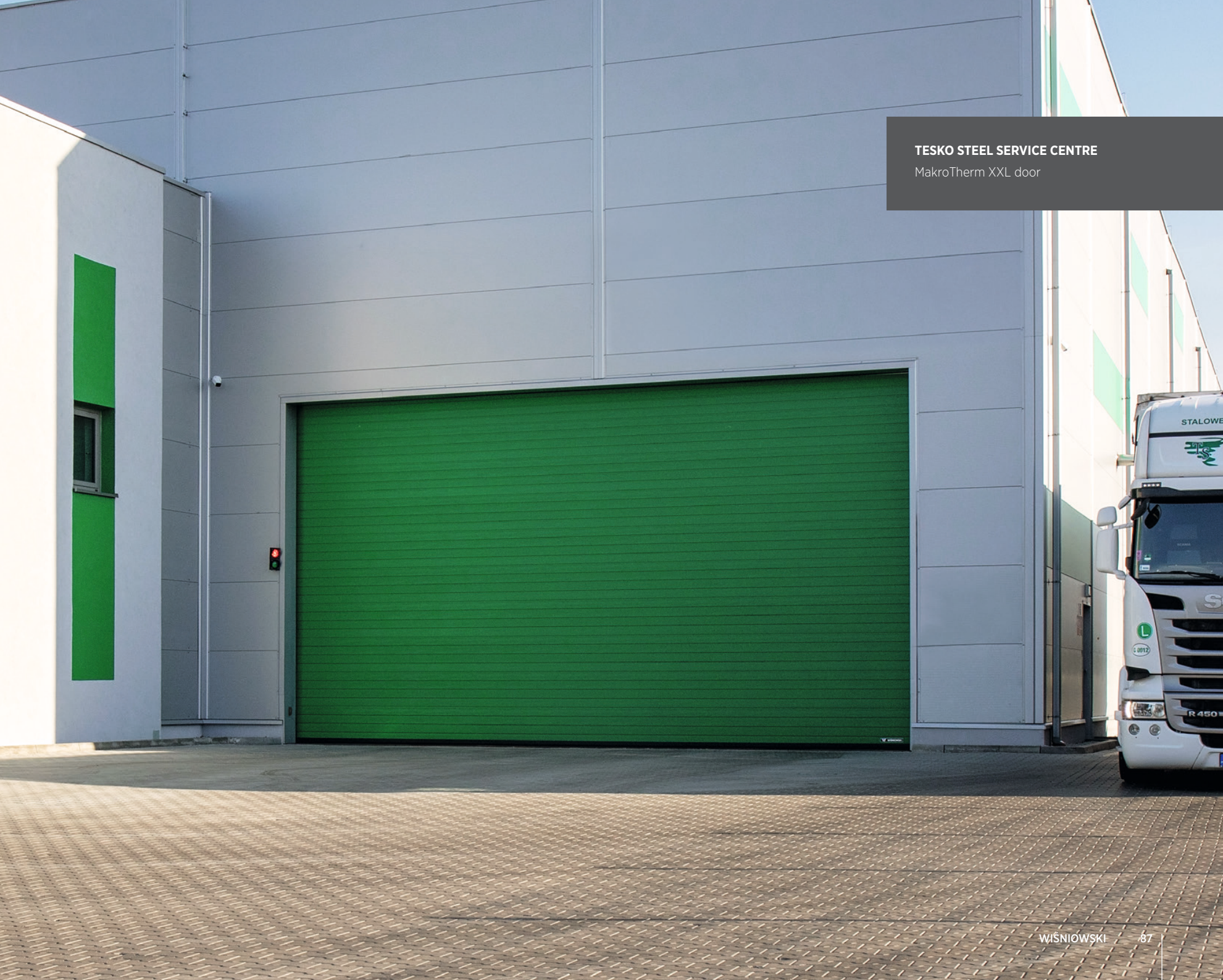
TESKO STEEL SERVICE CENTRE

MakroTherm XXL door (as seen from the inside).



TESKO STEEL SERVICE CENTRE

MakroTherm XXL door



CAR AND TRUCK SERVICE WORKSHOP

MakroPro ALU 2.0 doors.





4

5

INSPIRATION

MPK SUBBUS DEPOT IN NOWA SÓL

MakroPro ALU 2.0 doors.



MPK SUBBUS DEPOT IN NOWA SÓL

MakroPro ALU 2.0 doors.



INSPIRATION

STATE FIRE DEPARTMENT IN ŽNIN

MakroPro 2.0 doors with aluminium glazings
brightening up the interior.





SCANIA

561 21

CT-5098M

INSPIRATION

TRANSPORT COMPANY

MakroPro 2.0 doors with aluminium glazings brightening up the interior.



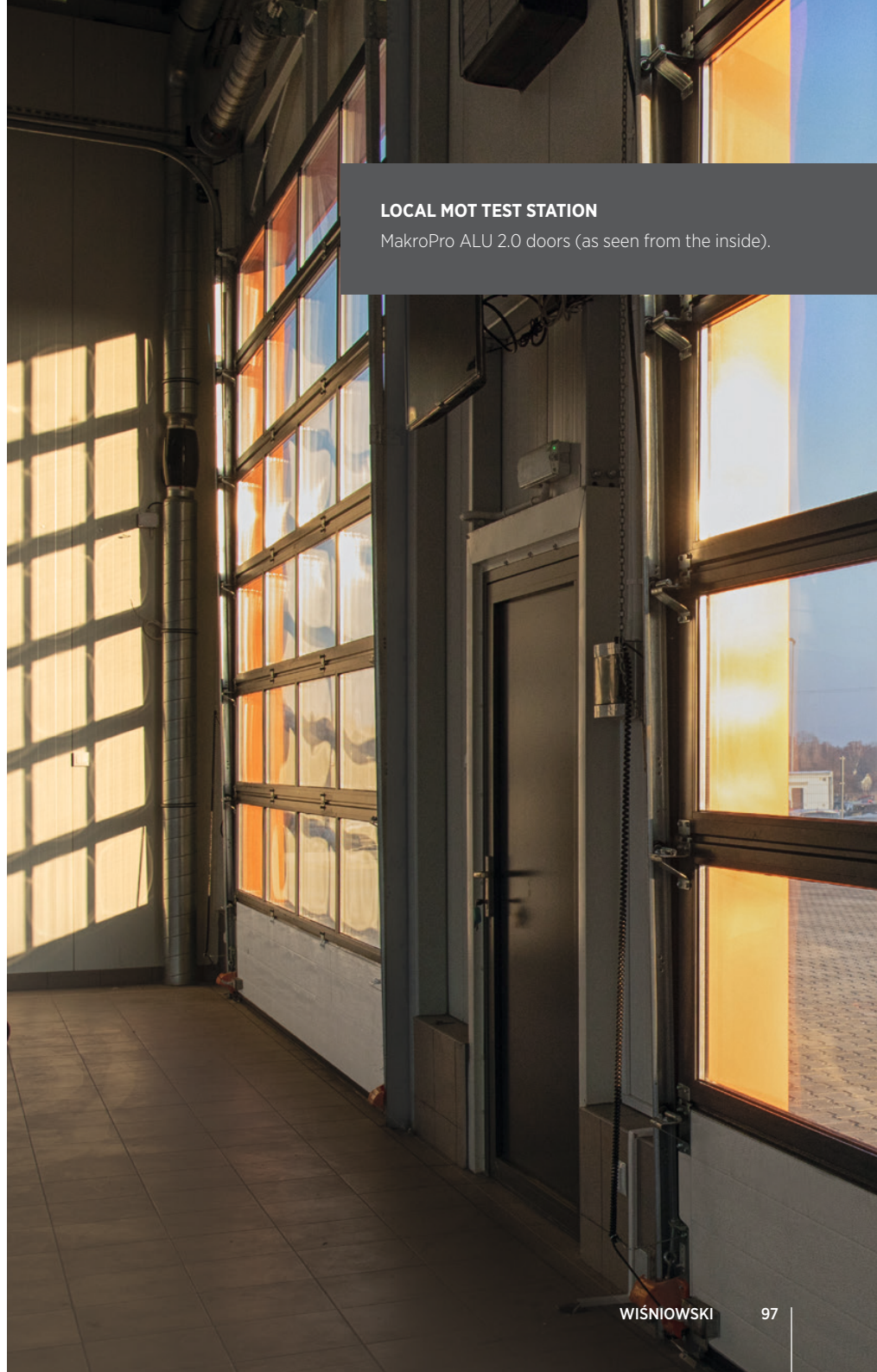


INSPIRATION

LOCAL MOT TEST STATION

MakroPro ALU 2.0 doors.





LOCAL MOT TEST STATION

MakroPro ALU 2.0 doors (as seen from the inside).

DPD DEPOT IN ZAMOŚĆ

MakroPro 2.0 doors with aluminium glazings
brightening up the interior.





INSPIRATION

VOLUNTEER FIRE DEPARTMENT IN ROKIETNICA

MakroTherm 2.0 doors.





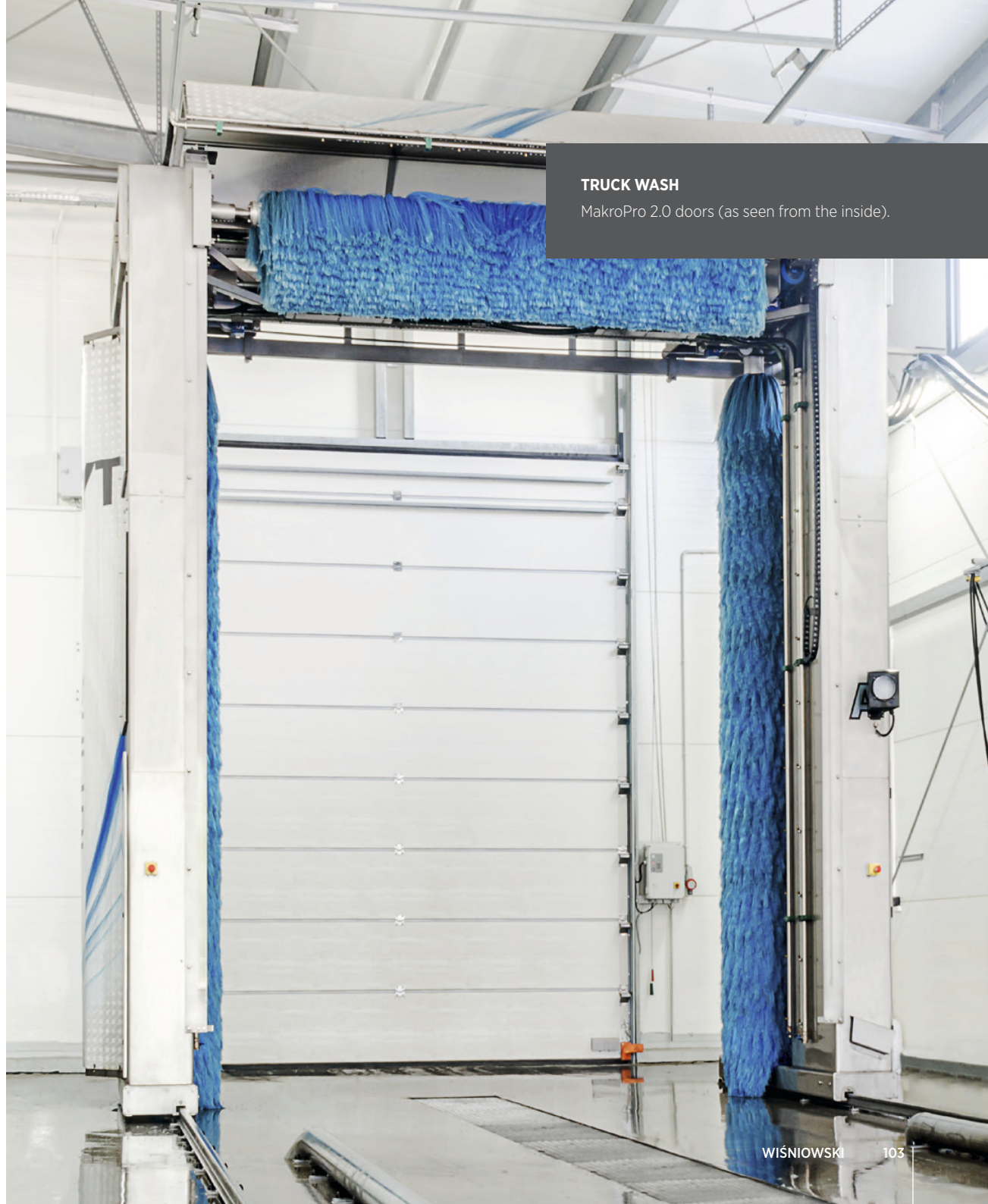
VOLUNTEER FIRE DEPARTMENT IN ROKIETNICA
MakroTherm 2.0 doors (as seen from the inside).

INSPIRATION

TRUCK WASH

MakroPro 2.0 doors with small windows.





TRUCK WASH

MakroPro 2.0 doors (as seen from the inside).

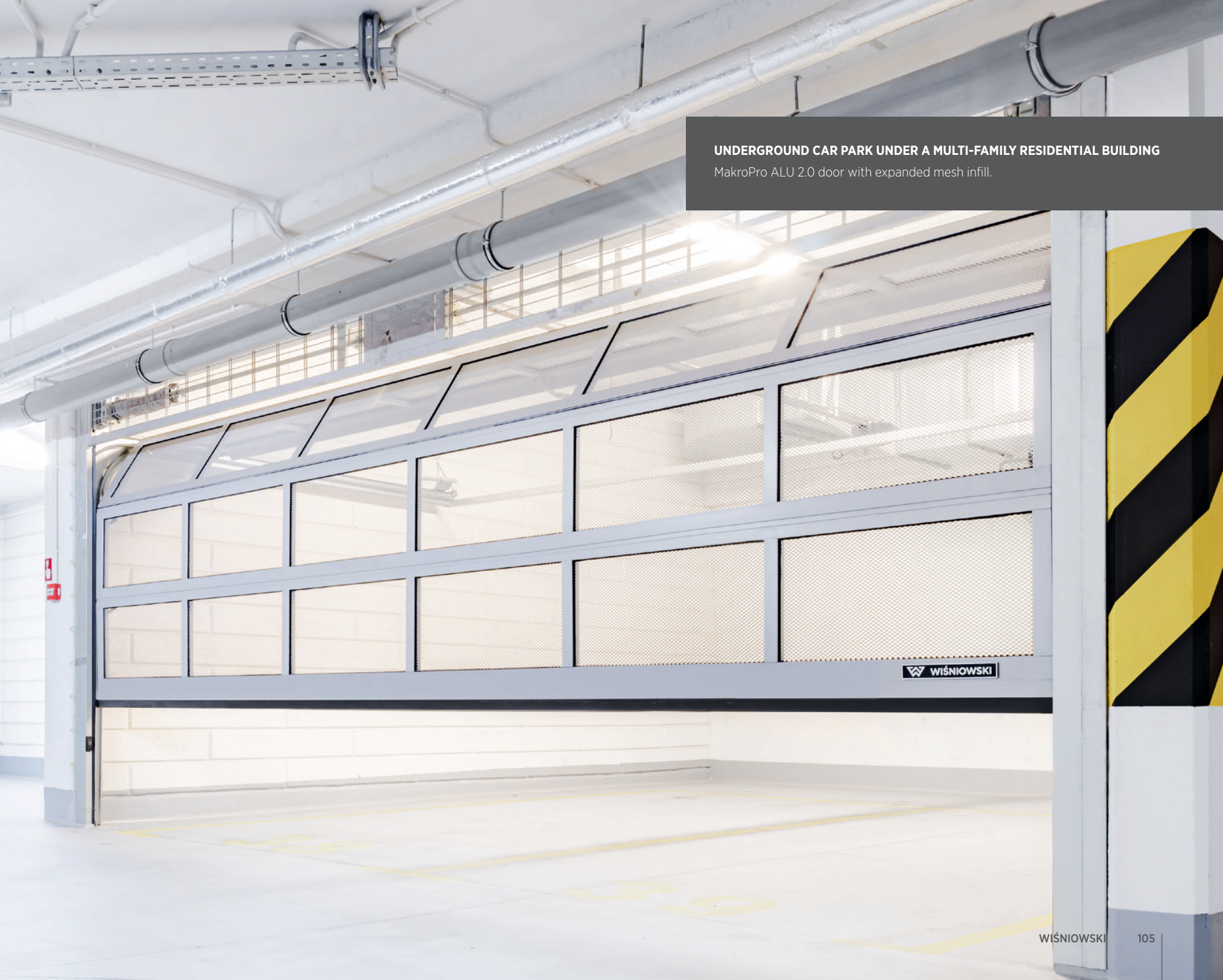
INSPIRATION

UNDERGROUND CAR PARK
MakroPro 2.0 door.



UNDERGROUND CAR PARK UNDER A MULTI-FAMILY RESIDENTIAL BUILDING

MakroPro ALU 2.0 door with expanded mesh infill.



WIŚNIEWSKI

INSPIRATION

NEWAG ROLLING STOCK MANUFACTURER

BR-100 roller doors.





NEWAG ROLLING STOCK MANUFACTURER
BR-100 roller doors (as seen from the inside).

INSPIRATION

WATERSPORTS CENTRE
BR-100 roller doors.





WIŚNIEWSKI HALL INCLUSIVE

The WIŚNIEWSKI Hall Inclusive collection is a comprehensive range of industrial gates, windows, doors, and fences designed with ergonomics, safety, durability, and reliability in mind. Innovative technological solutions gave birth to exceptional functionality that meets the highest requirements for specialist facility equipment. The products streamline high-capacity logistics and support smooth operation of your business.

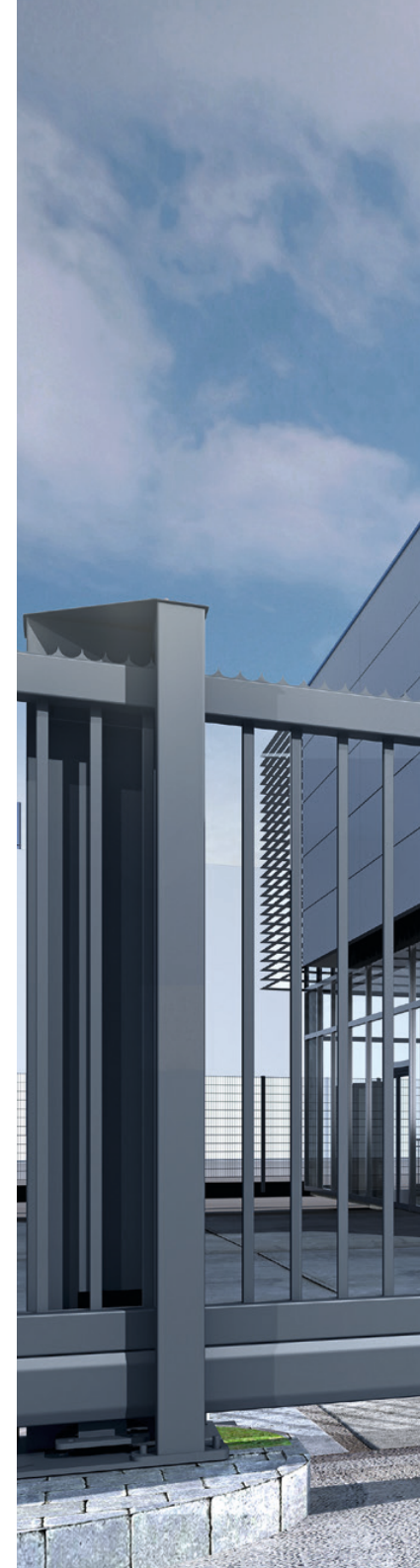
Our range includes sectional, roller, and overhead doors, steel and aluminium joinery, fence systems and more.



Industrial door
MakroPro 2.0

Eco seamless steel
door

Sliding gate
PI 200







WIŚNIEWSKI

GATES | WINDOWS | DOORS | FENCES



DISCOVER
MORE...



www.wisniowski.eu

The products shown in the photographic material often feature special equipment and do not always correspond to their standard versions • This brochure does not constitute an offer within the meaning of the Polish Civil Code. • The manufacturer reserves the right to introduce changes without notice. • NOTE: The colours shown in this brochure are for reference only • All rights reserved • Copying and use, in part or in full, is prohibited without the consent of WIŚNIEWSKI Sp. z o.o. S.K.A. • 03/23/EN